



Kristina M. Cragg, PhD

Valdosta State University – Strategic Research & Analysis
kmcragg@valdosta.edu

Jill A. Peerenboom, MS



You might be here because....

Responsible for knowing about the QEP

Responsible for finding out how much your peers spent

Want to learn more about

QEP

Curious to know what this session is about

[a person preoccupied with arcane details or procedures in a specialized field]





Motivation for the Study

Valdosta State University Reaffirmation

Speculative costs

SACS recommendation:

The Quality Enhancement Plan

human and financial resources to develop, implement,



Brief Literature Review



Research Questions

How much and in what ways do institutions budget for their Quality Enhancement Plans?

How do institutional budgets vary by institutional characteristics (i.e. size, sector, classification, control, financial aid awards, etc.)?



Methods/Data Collection

Data Collection:

Obtained reaffirmation list from SACS website
(n=228)

IPEDS Data to supplement QEP information

Searched institutional websites for QEPs

Downloaded publicly available QEPs (n=117)

Evaluated QEPs with useable budgets (n=72)

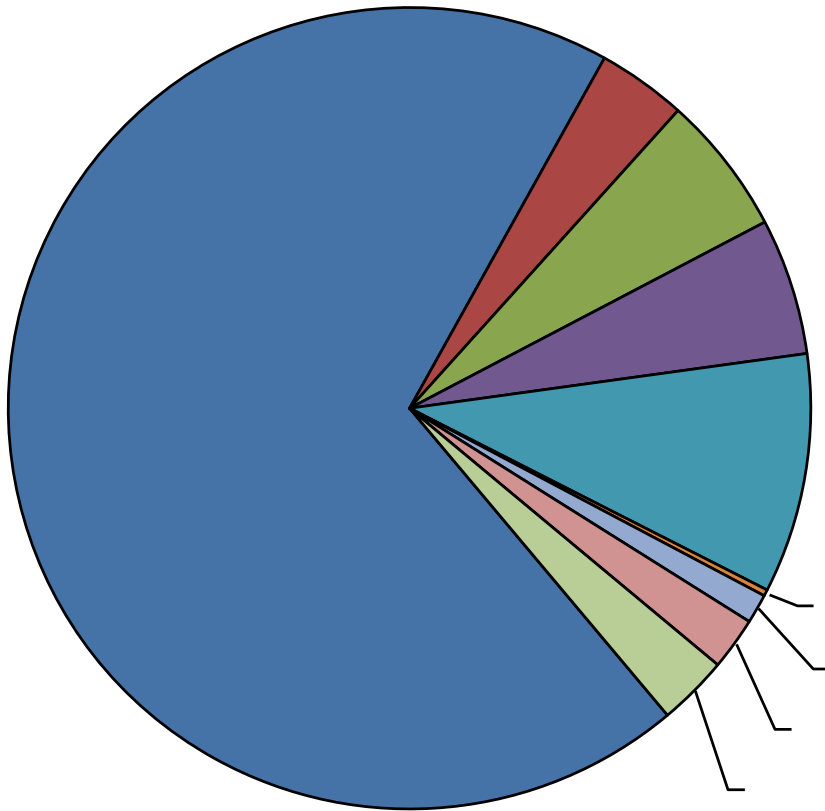






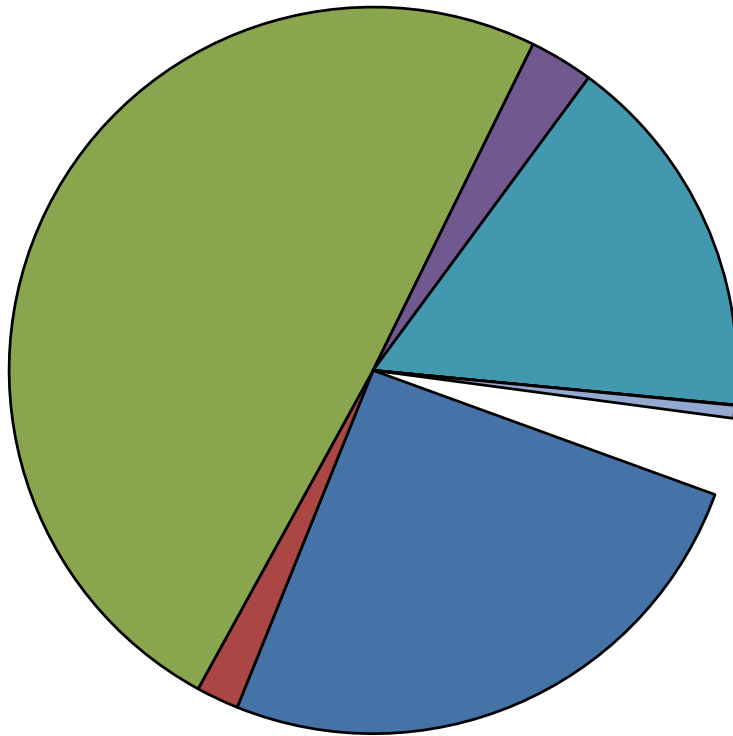
Exhibit 4:

Average Budget Category Amounts for Public Institutions



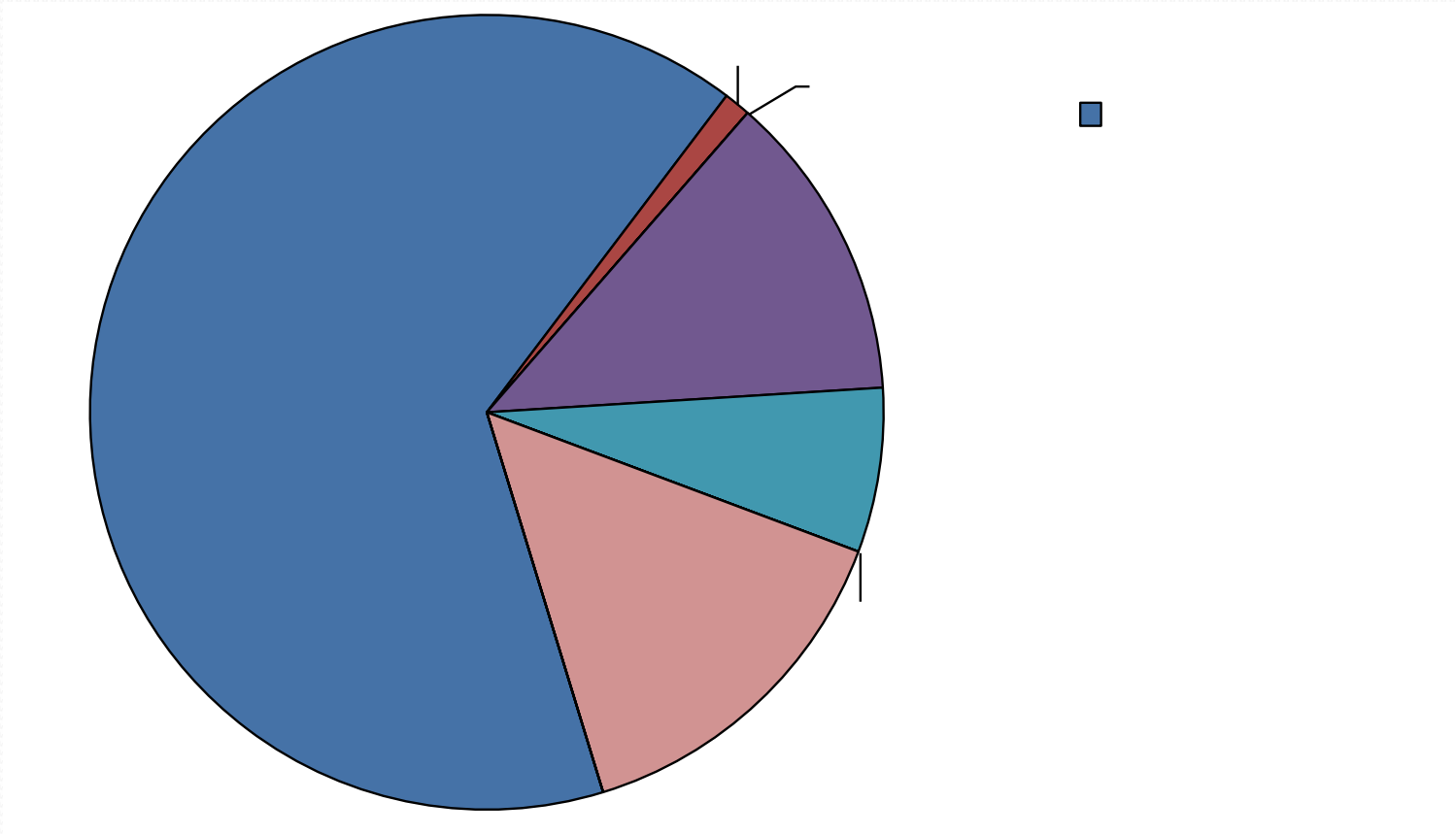
Source: VSU Strategic Research and Analysis, 2008.

Exhibit 5: Average Budget Category Amounts for Private Not-for-Profit Institutions



Source: VSU Strategic Research and Analysis, 2008.

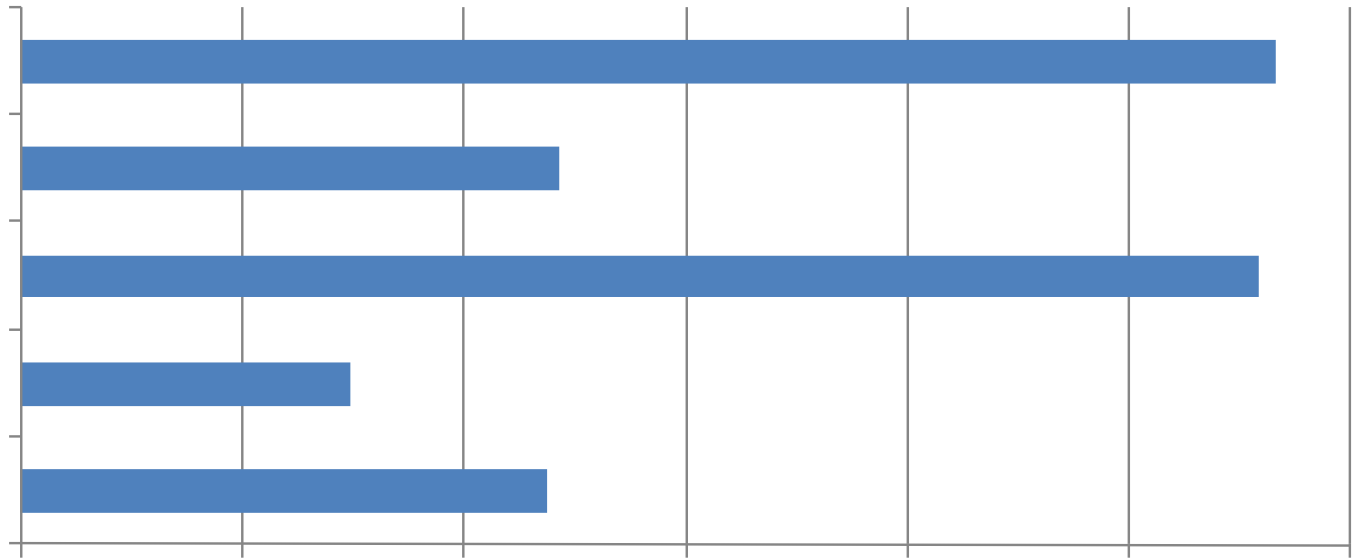
Exhibit 6: Average Budget Category Amounts for Private For-Profit



Source: VSU Strategic Research and Analysis, 2008.



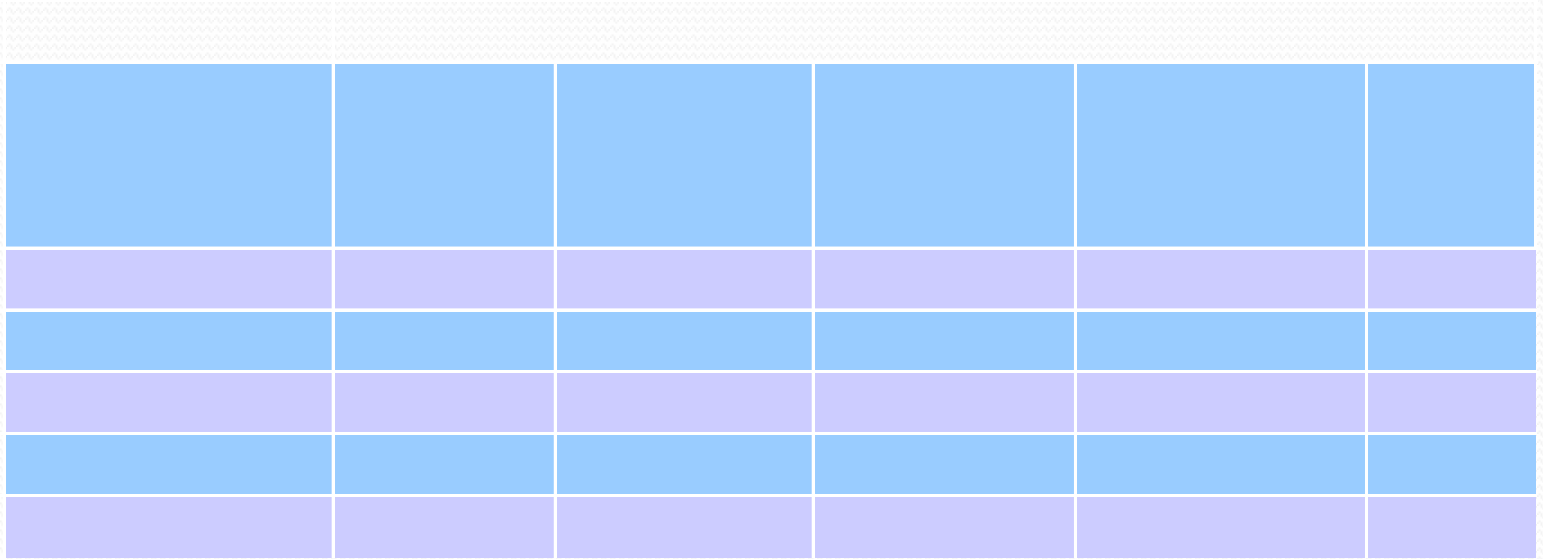
Exhibit 8: Average Spending by Degree-Granting Classification (2000)



Source: VSU Strategic Research and Analysis, 2008.



Exhibit 9: QEP Spending by Percentage of Students Receiving Federal Financial Aid



Source: VSU Strategic Research and Analysis, 2008.





ANOVA Results—Carnegie Size

		ANOVA					
		Sum of Squares	df	Mean Square	F	Sig.	
Year YT Wages/ Benefits	Betw een Groups	3.3E+013	9	3.642E+012	4.715	.000	
	Within Groups	4.8E+013	62	7.724E+011			
	Total	8.1E+013	71				
Year YT Supplies/ Materials	Betw een Groups	1.4E+011	9	1.532E+010	1.449	.187	
	Within Groups	6.6E+011	62	1.057E+010			
	Total	7.9E+011	71				
Year YT Training/ Travel	Betw een Groups	1.2E+011	9	1.340E+010	1.858	.076	
	Within Groups	4.5E+011	62	7213899102			
	Total	5.7E+011	71				
Year YT Total	Betw een Groups	6.5E+013	9	7.229E+012	1.525	.159	
	Within Groups	2.9E+014	62	4.740E+012			
	Total	3.6E+014	71				

Source: VSU Strategic Research and Analysis, 2008.

ANOVA Results—Control of Institution

ANOVA

		Sum of Squares	df	Mean Square	F	Sig.
Year YT Wages/ Benefits	Betw een Groups	5.8E+012	2	2.879E+012	2.651	.078
	Within Groups	7.5E+013	69	1.086E+012		
	Total	8.1E+013	71			
Year YT Supplies/ Materials	Betw een Groups	9.2E+009	2	4579725339	.403	.670
	Within Groups	7.8E+011	69	1.137E+010		
	Total	7.9E+011	71			
Year YT Training/ Travel	Betw een Groups	2.8E+010	2	1.396E+010	1.784	.176
	Within Groups	5.4E+011	69	7825195639		
	Total	5.7E+011	71			
Year YT Total	Betw een Groups	1.2E+012	2	5.913E+011	.114	.892
	Within Groups	3.6E+014	69	5.185E+012		
	Total	3.6E+014	71			



ANOVA Results—Federal Grant Aid

ANOVA

Betwt.558	12.702	r	3.0E+012	3	1.007E+012	.851	.471
			7.6E+013	64	1.183E+012		
			7.9E+013	67			
			3.9E+009	3	1294226351	.105	.957
			7.9E+011	64	1.228E+010		
			7.9E+011	67			
			5.9E+010	3	1.961E+010	2.539	.064
			4.9E+011	64	7721310554		
			5.5E+011	67			
			2.7E+013	3	9.107E+012	1.780	.160
			3.3E+014	64	5.117E+012		
			3.5E+014	67			

Source: VSU Strategic Research and Analysis, 2008.



Discussion....

More budget detail is needed to reduce subjectiveness
Different types of institutions allocate differently:



Application of Results - VSU

(over 10K)

Plan to spend on average \$3M (min=\$529K and max \$6.1M) over 5 years.

There are other very large institutions in this category,

Some information is better than no information

Provide our senior leadership with benchmarking data

What about my institution?

How much do other institutions like mine plan to spend?



Final Thoughts and Questions...

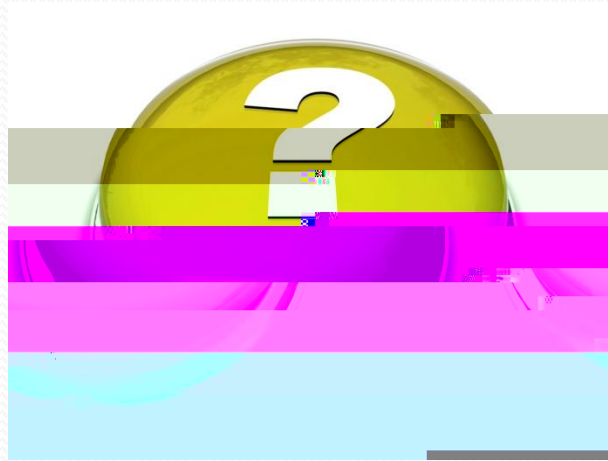
Silver, J. (2008). Anatomy of the QEP. *SACS Institute on Quality Enhancement Plans and Accreditation*. Orlando, FL
[<http://www.sacscoc.org/institute/2008/Tuesday,%20July%2029,%202008/Silver%20Plenary.pdf>]

fiscal times?

especially during constrained



Questions & Comments



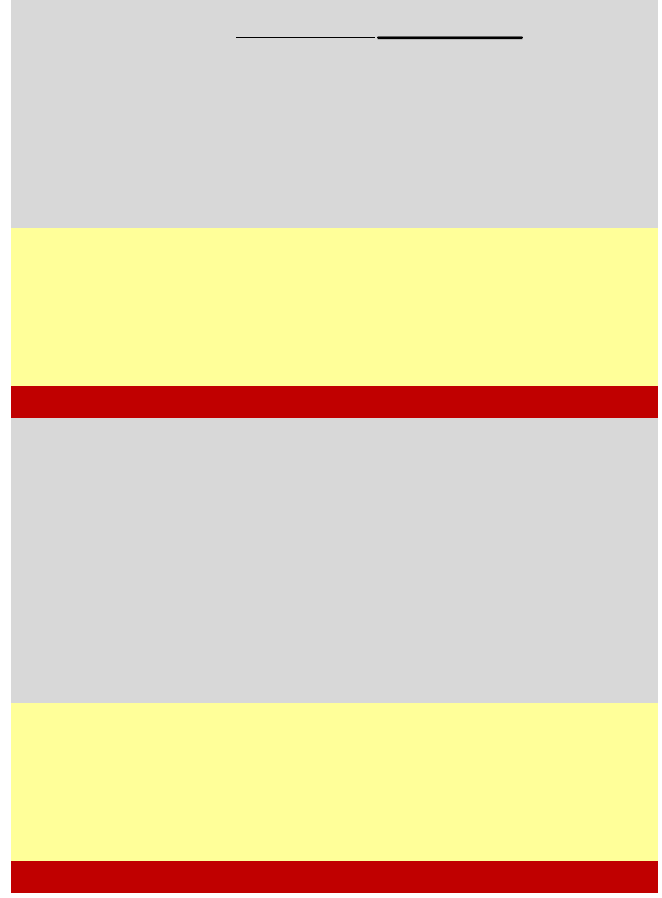
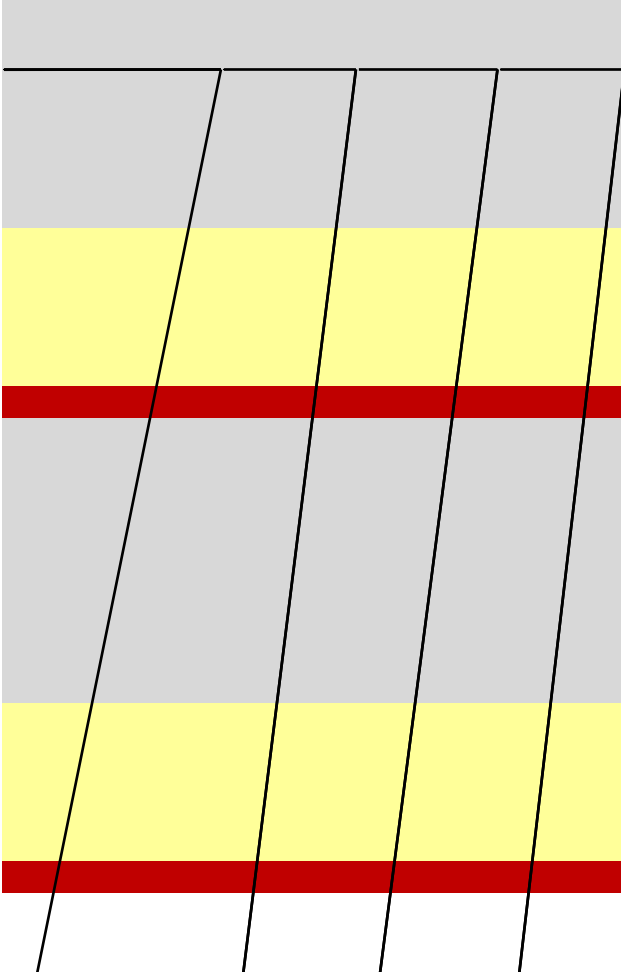
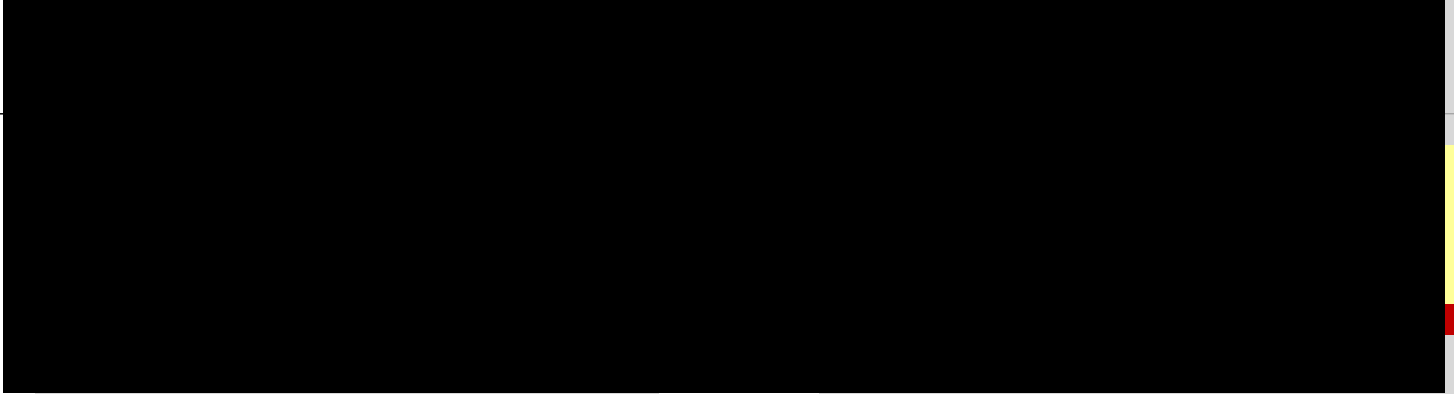


HOW MUCH DOES A QEP COST? A REVIEW OF QUALITY ENHANCEMENT PLANS, 2005-2007
 BY SIZE, CATEGORY, YEAR, AND INSTITUTIONAL CONTROL (MEANS)

VALDOSTA STATE UNIVERSITY

Size	Category/ Year	Public	Private not-for-profit	Private for-profit
	SpaceEquipment	\$26,836		
	WagesBenefits	\$522,735		

Size	Category/ Year	Public	Private not-for-profit	Private for-profit
	SpaceEquipment	\$237,375	\$0	
	WagesBenefits			





HOW MUCH DOES A QEP COST? A REVIEW OF QUALITY ENHANCEMENT PLANS, 2005-2007
LIST OF INSTITUTIONS INCLUDED IN THE STUDY

VALDOSTA STATE UNIVERSITY

SIZE	PUBLIC/ PRIVATE	INSTITUTION	SIZE	PUBLIC/ PRIVATE	INSTITUTION
2-year Very Large	Public Public Public	Collin County Community College Hillsborough Community College San Antonio College	4-year Large (>10,000)	Private	Baylor University
2-year Large (5,000- 9,999)	Public	Blinn College		Public	College of Charleston
	Public	Central Texas College		Public	Eastern Kentucky University
	Public	Northwest Mississippi Community College		Public	Georgia Institute of Technology
	Public	Southwest Tennessee Community College		Public	Kennesaw State University
2-year Medium (2,000- 4,999)	Public	Tallahassee Community College		Public	Texas Tech University
	Public	Abraham Baldwin Agricultural College		Public	The University of Alabama at Birmingham
	Public	Caldwell Community College and Technical Institute		Public	The University of Memphis
	Public	Cape Fear Community College		Public	The University of Southern Mississippi
	Public	Danville Community College		Public	The University of Texas - Pan American
	Public	Jackson State Community College	Public	The University of Texas at Arlington	
	Public	Lee College	Public	The University of Texas at El Paso	
	Public	Madisonville Community College	Public	University of Central Florida	
2-year Small (500- 1,999)	Public	Northwest Vista College	Public	University of Louisville	
	Public	West Kentucky Community & Technical College	Public	University of New Orleans	
	Public	York Technical College	PFP	Sullivan University	
	Public	Brazosport College	Private	Liberty University, Inc.	
	Public	Craven Community College	Private	Loyola University New Orleans	
	Public	Howard College	Private	Mercer University	
	Public	Isothermal Community College	Private	Rollins College	
	Public	Lamar Institute of Technology	Private	St. Edward's University	
2-year Very Small (<500)	Public	Southwestern Community College	Private	Wake Forest University	
	Public	Wayne Community College	Public	Wilmington University	
	Public	Wilkes Community College	Public	Columbus State University	
	Private	Lon Morris College	Public	Florida Gulf Coast University	
	Other	Private	Asbury Theological Seminary	Public	McNeese State University
		Public	Medical University of South Carolina	Public	Nicholls State University
				Public	Northwestern State University
4-year Small (1,000- 2,999)			Public	Tennessee Technological University	
			Public	Texas A&M International University	
			Public	The College of William & Mary	
			Public	West Texas A&M University	
			Private	Berea College	
			Private	Centre College	
			Private	Converse College	
			Private	Davidson College	
			Private	Hampden-Sydney College	
			Private	High Point University	
4-year Very small (<1,000)			Private	LeTourneau University	
			Private	Mary Baldwin College	
			Private	University of the Cumberlands	
		PFP	South University		
		Private	Emmanuel College		
		Public	Texas A&M University - Texarkana		

Source: Cragg, K. M. & Peerenboom, J. A. (2008). *How much does a QEP cost? A review of Quality Enhancement Plans, 2005-2007*. Valdosta State University, Office of Strategic Research & Analysis. www.valdosta.edu/sra

Kristina M. Cragg, Ph.D. - Assistant to the President for Strategic Research & Analysis, Valdosta State University. kmcragg@valdost.edu

Jill A. Peerenboom - Doctoral Student in Higher Education and Program Coordinator for the Certificate in Institutional Research, Florida State University. japeerenboom@admin.fsu.edu

PFP = Private For Profit