



Kristina M. Cragg, Ph.D.

Overview

Summary of what we learned

Demographics of adult learners at VSU

ISAS/ALI Comparison Results from CAEL

ISAS Institutional Comparison Data

ALI Results from Noel-Levitz

Questions

Summary

On average, 842 adult learners are admitted to VSU each academic year.

Over the past six years (2002-2008):

58.7% were undergraduate students and 41.3% were graduate students.

33.5% were males and 66.5% were females.

The average age was 34 years.



Summary

In Fall 2008, just over 1,600 undergraduate adult learners were enrolled.

Most common major for undergraduates:

Sociology, Anthropology, and Criminal Justice

Early Childhood Education

Nursing

Adult and Career Education.



Summary & Definition

Of the total number of academic degrees VSU awarded during the past six years, 21.6% were awarded to adult learners.

Nearly half of the adult learner population transfers in academic credits to VSU; the other half are first-time students.

Definition: For this study, adult learners were age 25 and above at the time of their initial enrollment at VSU.



Enrollment Factors for Students

EXHIBIT 1: ENROLLMENT FACTORS FOR ADULT AND TRADITIONAL LEARNERS

Rank	Undergraduate Adult Students	Rank	Traditional Students
1	Academic reputation	1	Academic reputation
2 (tie)	Availability of evening/weekend courses	2	Financial aid
2 (tie)	Future employment opportunities	3	Cost
4	Campus location	4	Personalized attention prior to enrollment
5	Personalized attention prior to enrollment	5	Size of institution

Source: *Adult Learners in Higher Education*, 2007, p. 43.

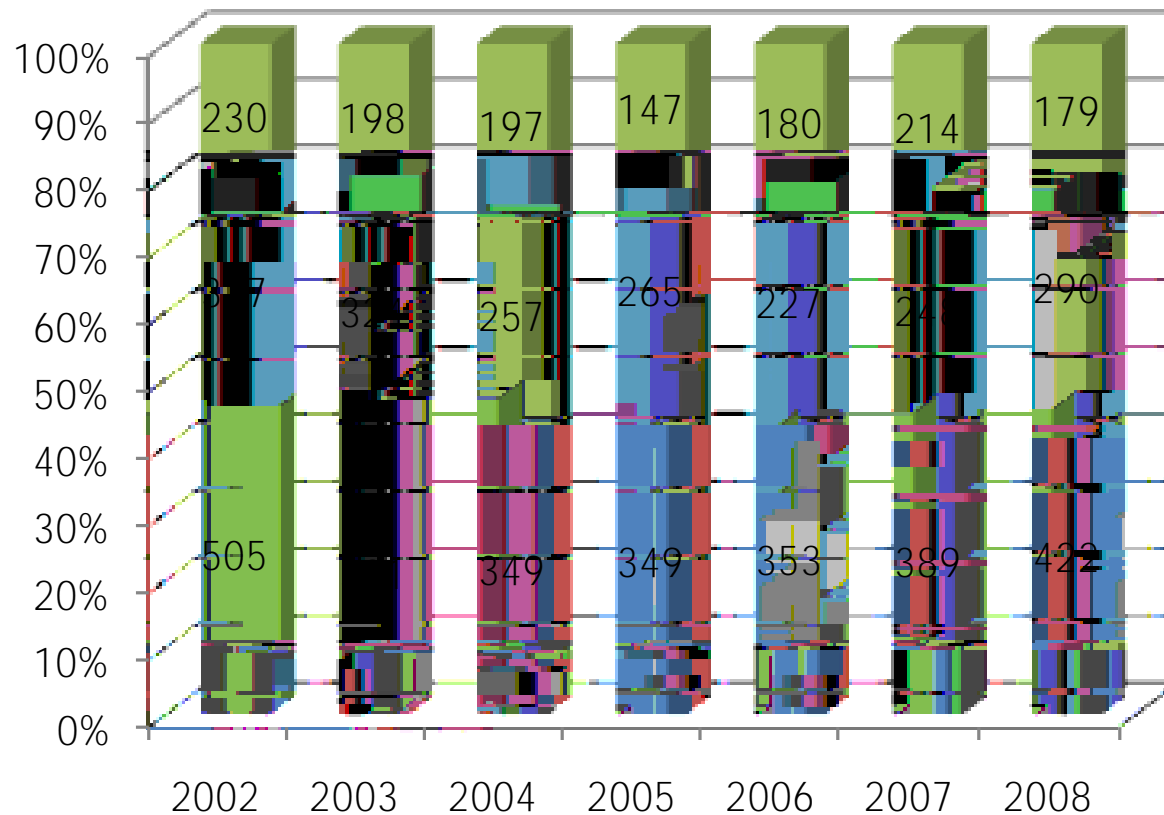


Demographics of Adult Learners

Source: VSU SRA Office, March 2009.

Demographics of Adult Learners

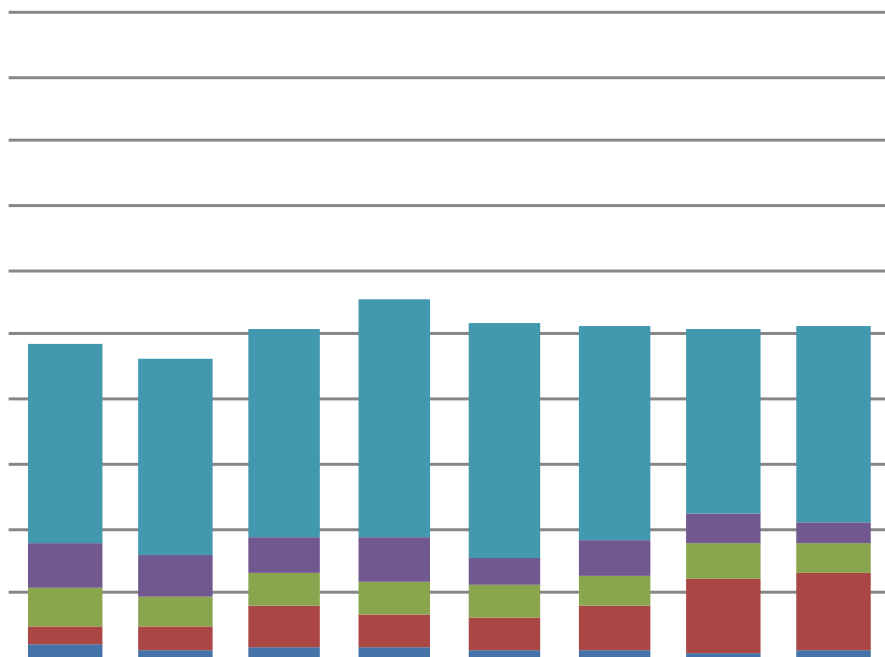
EXHIBIT 3: NUMBER OF ADULT LEARNERS ADMITTED BY TERM, FALL 2002 TO FALL 2008



Source: VSU SRA Office, March 2009.

Demographics of Adult Learners

EXHIBIT 4: NUMBER OF ADULT LEARNERS ADMITTED BY COLLEGE BY ACADEMIC YEAR, FALL 2002 TO FALL 2008





Demographics of Adult Learners

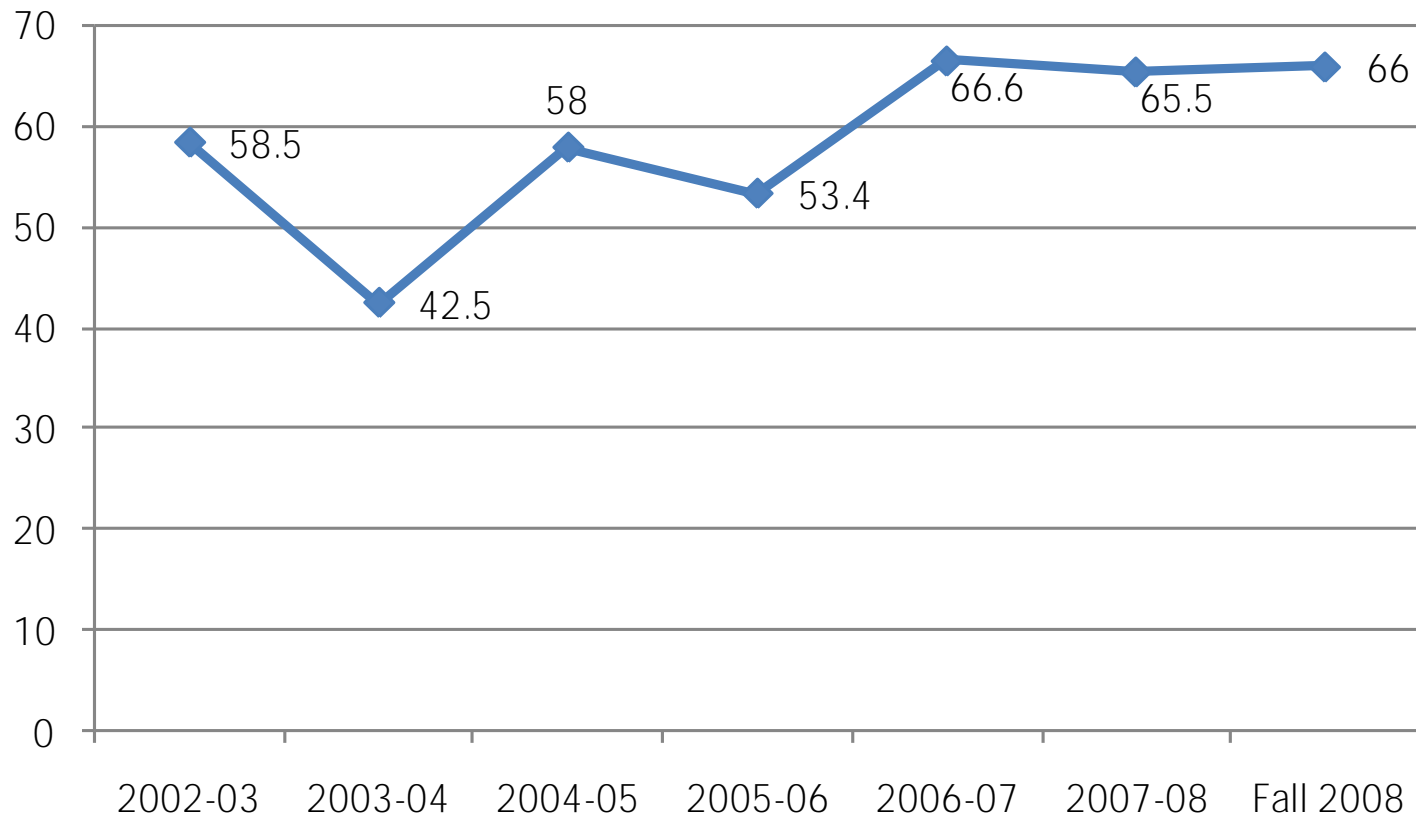
EXHIBIT



Demographics of Adult Learners

Demographics of Adult Learners

EXHIBIT 8: AVERAGE HOURS TRANSFERRED, FALL 2002 TO FALL 2008



Source: VSU SRA Office, March 2009.

Demographics of Adult Learners

EXHIBIT 9: AVERAGE AGE OF ADULT LEARNERS BY MAJOR (TOP 20 BY AGE),
FALL 2002 TO FALL 2008

Major	Average Age	Major	Average Age
Applied Mathematics	46	Library and Information Science	38
American Sign Language/Interpreting	40	History, General	37
Adult and Career Education	40	English	37
Curriculum and Instruction	39	Educational Leadership	36
Art	39	General Studies	36
French Language and Literature	39	School Psychology	36
Instructional Technology	39	Legal Assistance Studies	36
Technical, Trade, and Industrial Education	38	Special Education	36
Reading Education	38	Secondary Education	36
Cosmetology	38	Master of Social Work	36

Source: VSU SRA Office, March 2009.



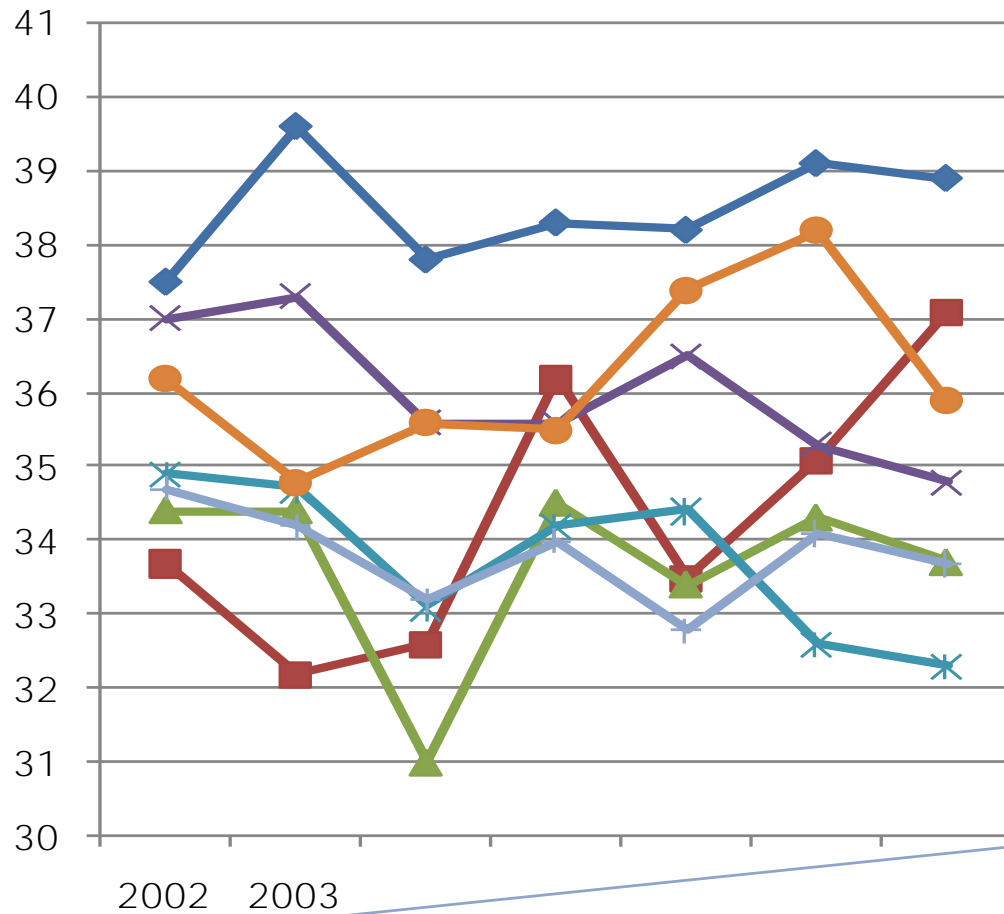
Demographics of Adult Learners

EXHIBIT 10: AVERAGE AGE OF ADULT LEARNERS BY MAJOR (BOTTOM 20 BY AGE), FALL 2002 TO FALL 2008

Major	Average Age	Major	Average Age
Environmental Geography	31	Economics	30
Political Science	31	Radiologic Technology	30
Health and Physical Education	31	Marketing	30
Speech Communication	31	Philosophy	29
Biology	31	Music Performance	28
Communication Disorders	30	Mass Media	28

Demographics of Adult Learners

EXHIBIT



Demographics of Adult Learners

EXHIBIT 13: ADULT LEARNERS BY ECONOMIC DEVELOPMENT REGION, FALL 2002 TO FALL 2008

Economic Development Region	Percent
Southwest	44.80%
Southeast	21.10%
Out of State	20.90%
Central	4.60%
Metro Atlanta	4.60%
Northeast	1.30%
East Central	1.00%
West Central	1.00%
Northwest	0.70%

Source: VSU SRA Office, March 2009.

Demographics of Adult Learners

EXHIBIT 14: ADULT LEARNERS ADMITTED BY GEORGIA METRO REGION (TOP 3) BY YEAR



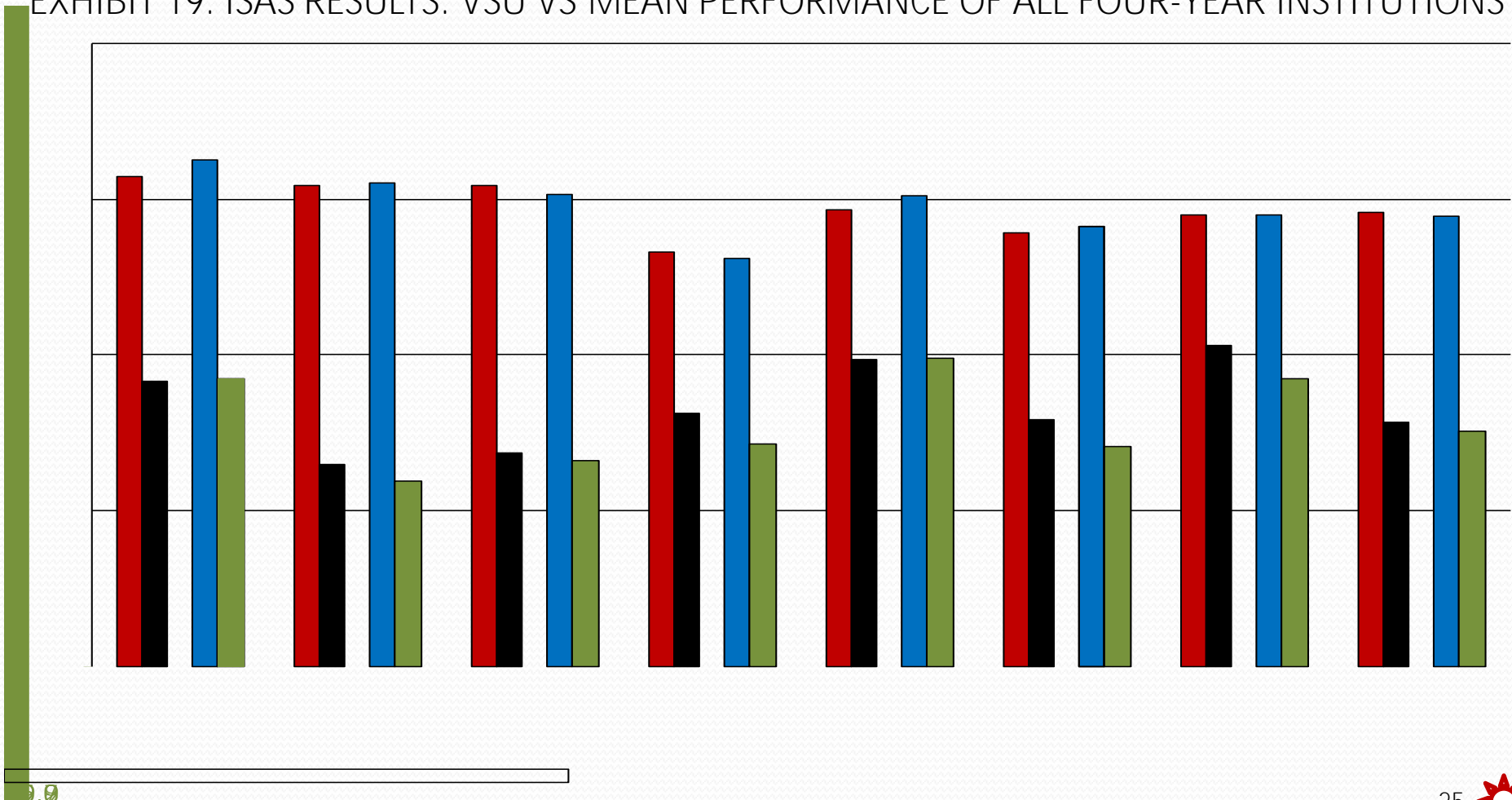






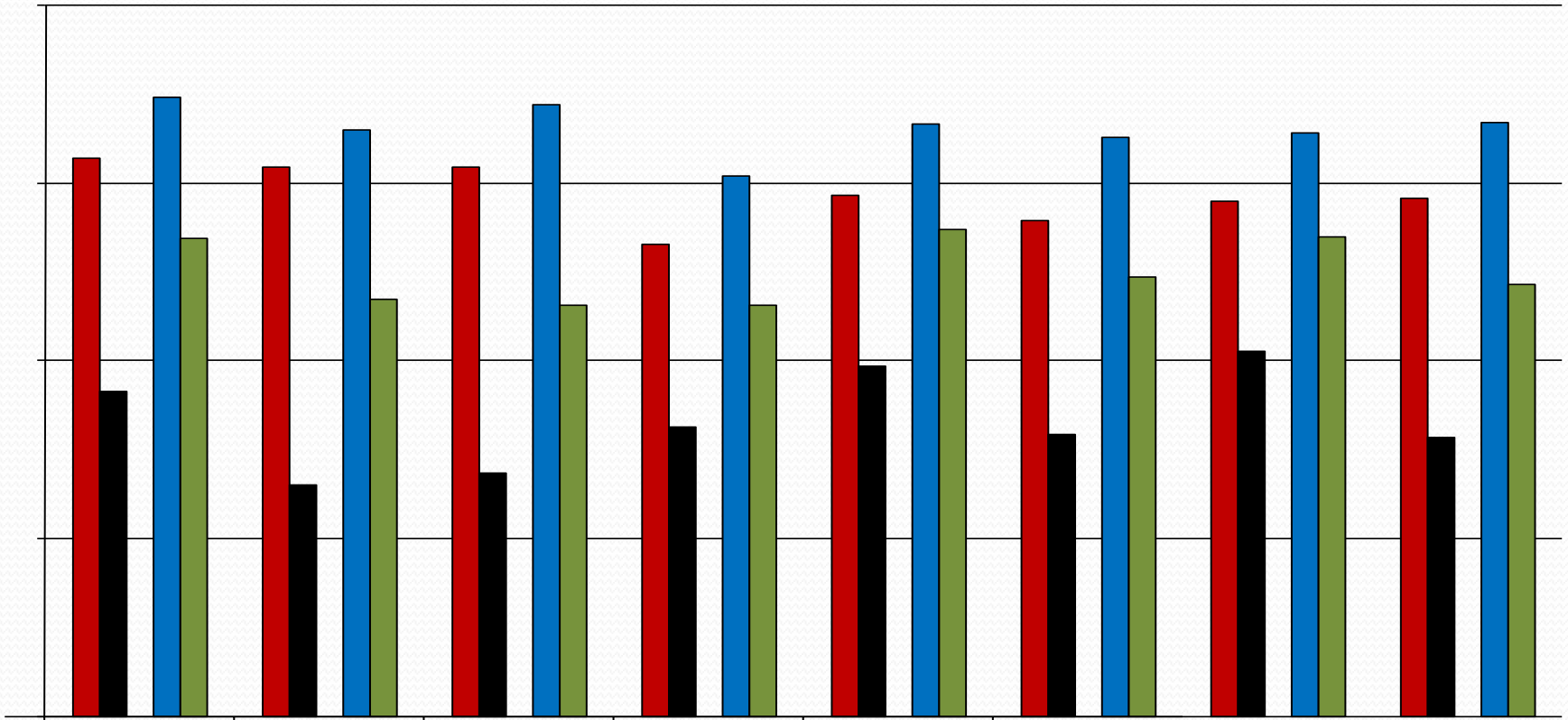
ALI Results

EXHIBIT 19: ISAS RESULTS: VSU VS MEAN PERFORMANCE OF ALL FOUR-YEAR INSTITUTIONS



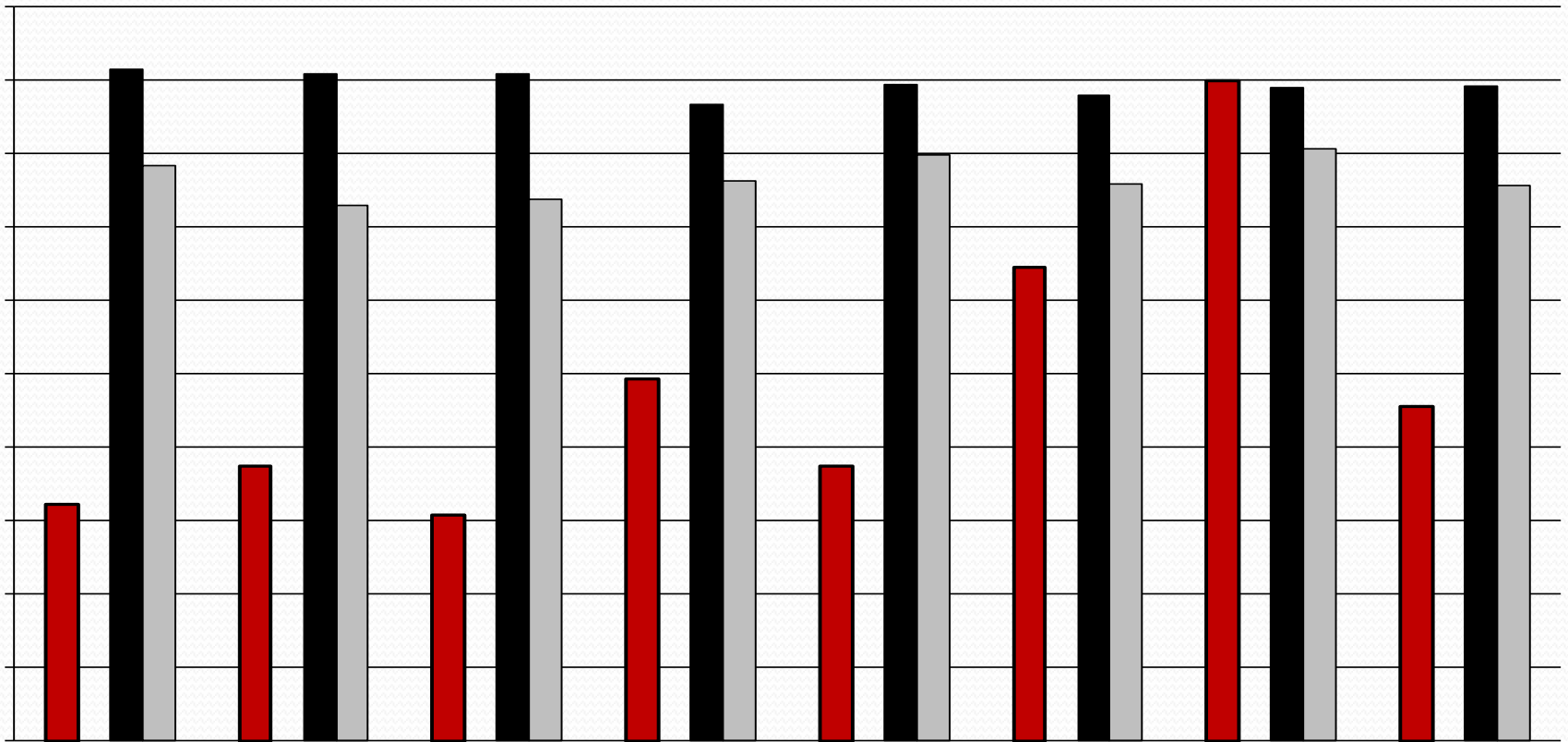
ALI Results

EXHIBIT 20: ISAS RESULTS: VSU VS BEST FOUR-YEAR PERFORMER IN EACH CATEGORY



ISAS and ALI Results

EXHIBIT 21: COMBINED RESULTS ISAS & ALI FOR VSU





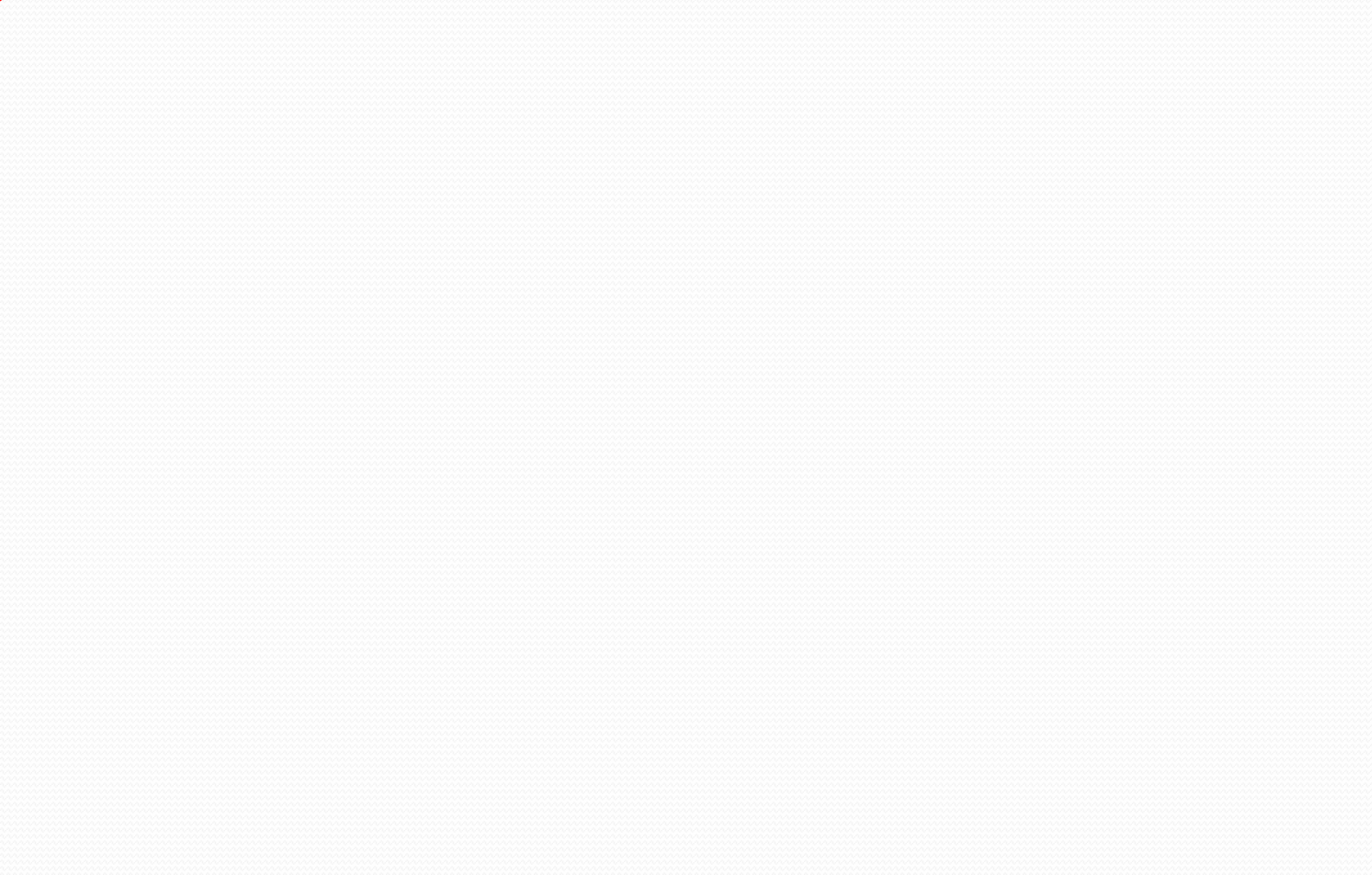
ISAS Comparison Results

ISAS Comparison Results

		Community College Responses	University Responses	All Responses
Q9-Which best describes how adult-focused modes of instruction are delivered?	Concentrated in a special school or unit	10.60%	30.00%	16.40%
	Characteristics of the entire institution	53.20%	30.00%	46.30%
	No Practices especially designed to serve adult learners pre	21.30%	10.00%	17.90%
	Other	14.90%	30.00%	19.40%

Source: CAEL, 2009





ISAS Comparison Results

		Community College Responses	University Responses	All Responses
Q19g-Entering Students - A single advisor or point of contact from whom to seek help	All	34.00%	55.00%	40.30%
	Most	17.00%	30.00%	20.90%
	Some	40.40%	15.00%	32.80%
	Almost none	8.50%	0.00%	6.00%

		Community College Responses	University Responses	All Responses
Q19k-Entering Students - A study contract or individualized plan of study	All	6.40%	20.00%	10.40%
	Most	14.90%	35.00%	20.90%
	Some	38.30%	30.00%	35.80%
	Almost none	34.00%	10.00%	26.90%
	Not available	6.40%	0.00%	4.50%
	No response	0.00%	5.00%	1.50%

Source: CAEL, 2009

ISAS Comparison Results

		Community College Responses	University Responses	All Responses
Q25a-Instructional delivery - Face-to-face classes daytime hours	Significant mode	97.90%	75.00%	91.00%
	Available mode	2.10%	25.00%	9.00%

		Community College Responses	University Responses	All Responses
Q25b-Instructional delivery - Face-to-face classes evening hours	Significant mode	95.70%	60.00%	85.10%
	Available mode	4.30%	40.00%	14.90%

Source: CAEL, 2009

		Community College Responses	University Responses	All Responses
256-Instructional Delivery-Practice	Significant	17.0%	15.0%	16.4%
	Notable	72.0%	80.0%	69.7%
Instructional Delivery-Practice	Notable	10.6%	25.0%	14.9%



ISAS Comparison Results



Community
College
Responses University
Responses



Source: CAEL, 2009

ISAS Comparison Results

		Community College Responses	University Responses	All Responses
Q25i-Instructional delivery - Synchronous (live) computer-based delivery	Significant mode	14.90%	20.00%	16.40%
	Available mode	40.40%	40.00%	40.30%
	Not available	42.60%	40.00%	41.80%
	No response	2.10%	0.00%	1.50%

		Community College Responses	University Responses	All Responses
Q25j-Instructional delivery - Asynchronous computer-based delivery	Significant mode	51.10%	65.00%	55.20%
	Available mode	42.60%	30.00%	38.80%
	Not available	4.30%	5.00%	4.50%
	No response	2.10%	0.00%	1.50%

Source: CAEL, 2009

ALI Results

Results materials

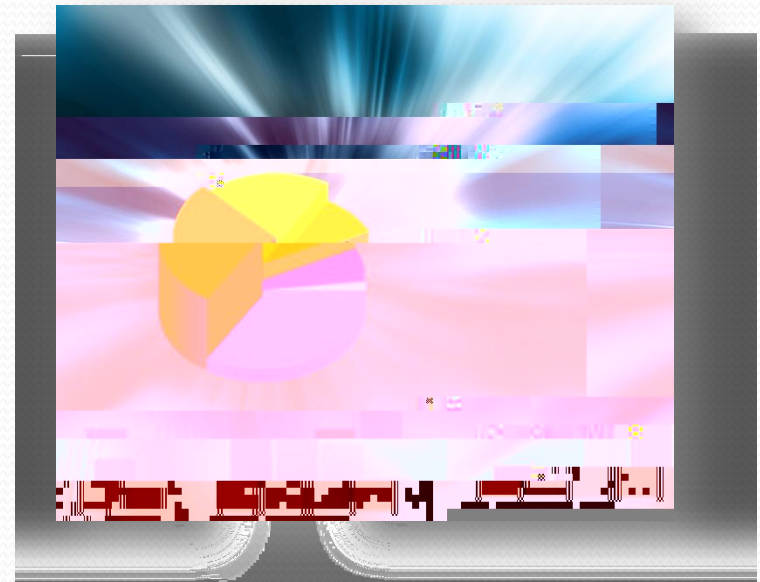
HTML results file

Raw data file (tab delimited)

Instructions for using raw data file

File format description

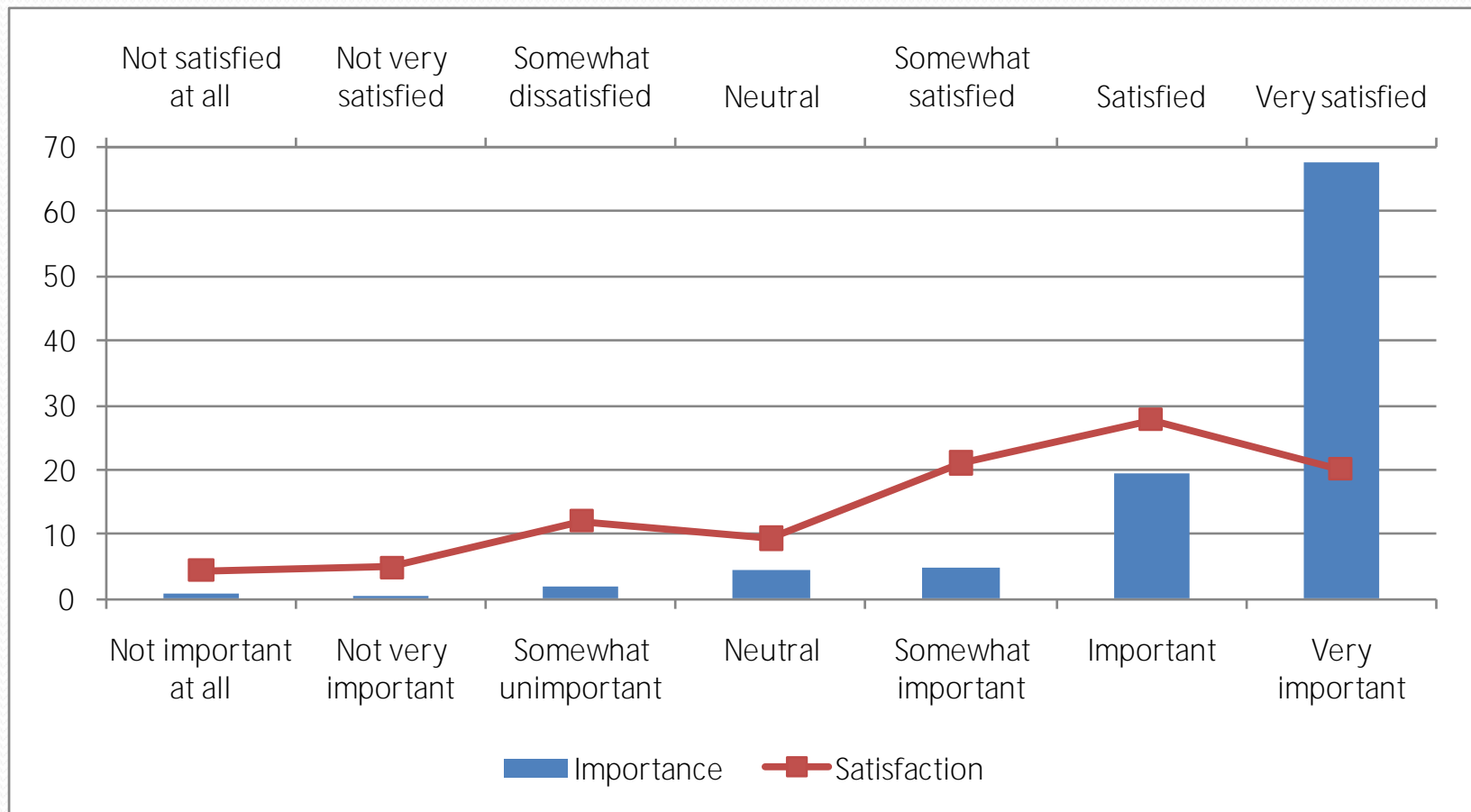
SPSS syntax file





ALI Results

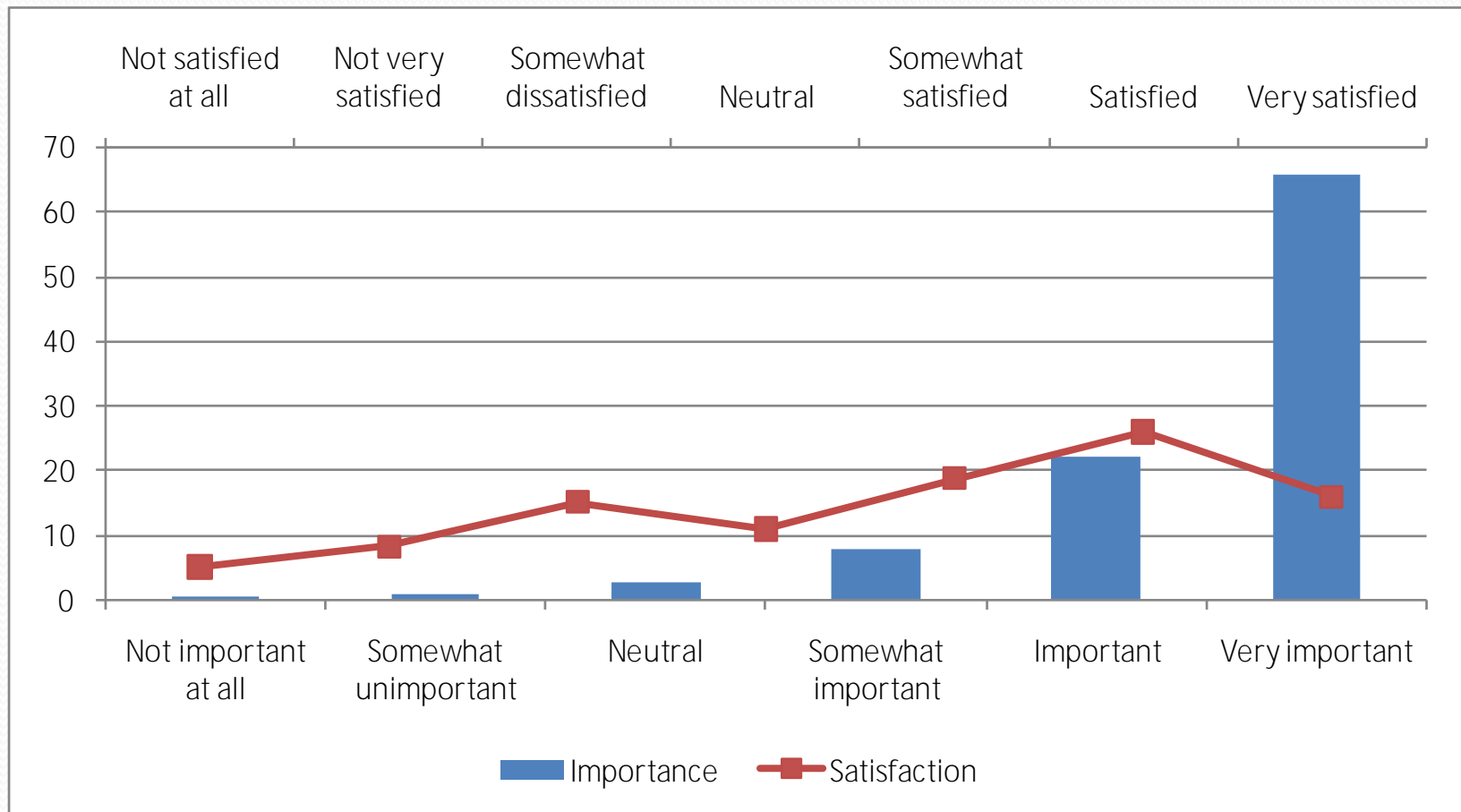
EXHIBIT 22: MY PROGRAM ALLOWS ME TO PACE MY STUDIES TO FIT MY LIFE AND WORK SCHEDULES.



Source: ALI, 2009; analysis by VSU SRA, June 2009.

ALI Results

EXHIBIT 23: SUFFICIENT COURSE OFFERINGS WITHIN MY PROGRAM OF STUDY ARE AVAILABLE EACH TERM.



Source: ALI, 2009; analysis by VSU SRA, June 2009.

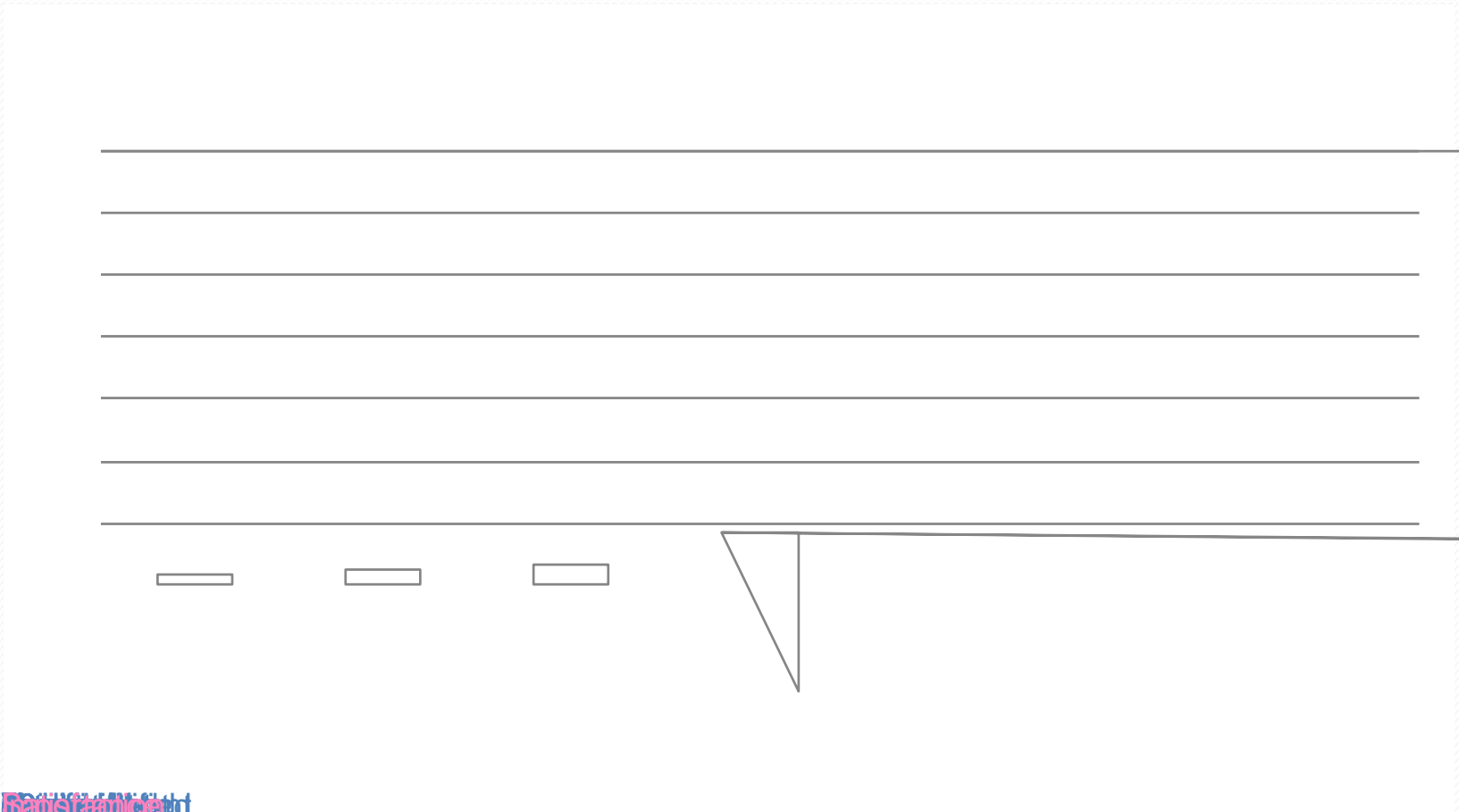


ALI Results

EXHIBIT 24: WHEN I MISS A DEADLINE OR FALL BEHIND IN MY STUDIES,
SOMEONE FROM THE INSTITUTION CONTACTS ME.

ALI Results

EXHIBIT 25: MY INSTRUCTORS ENCOURAGE STUDENT-TO-STUDENT INTERACTIONS THROUGH A VARIETY OF TECHNIQUES.

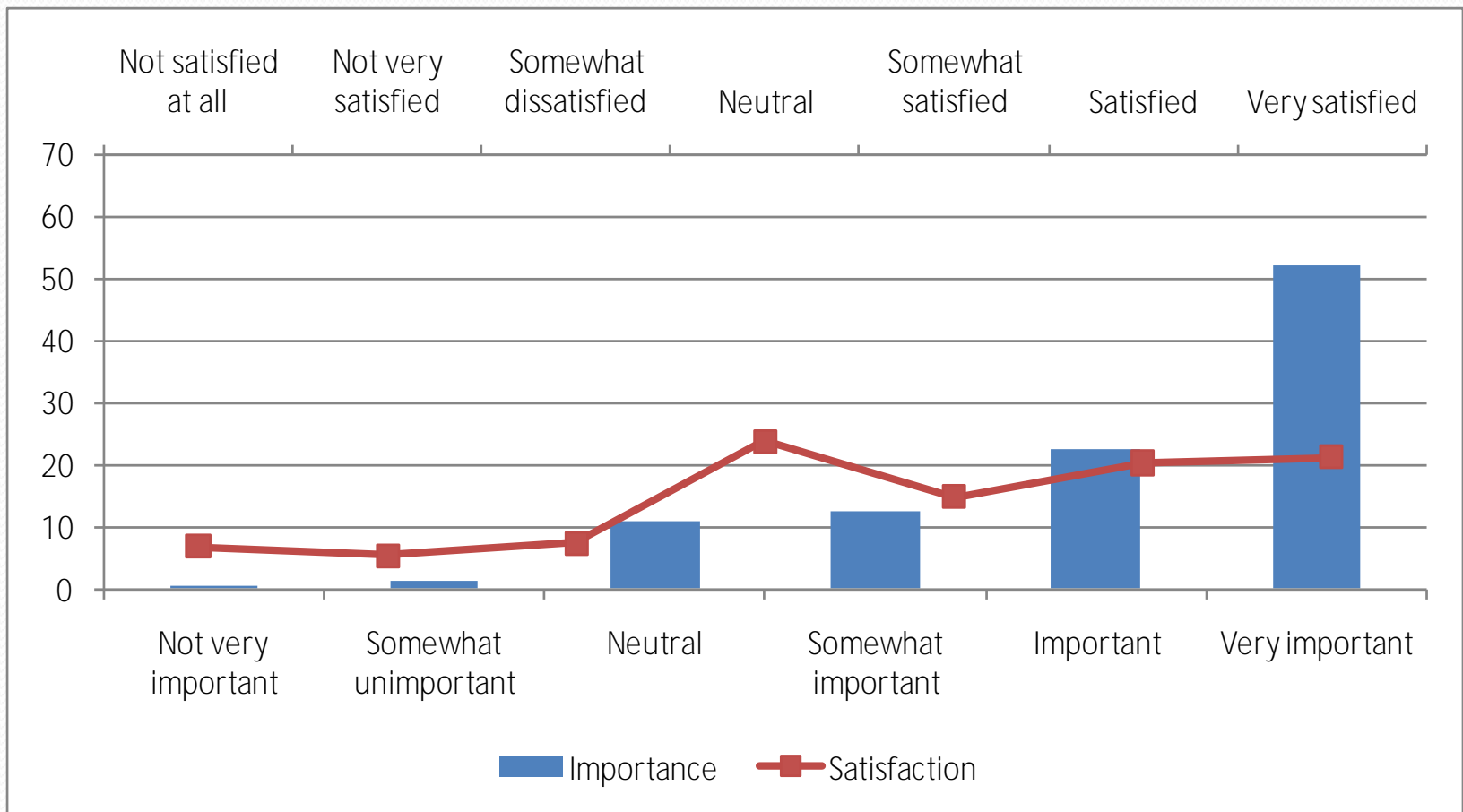




ALI Results

ALI Results

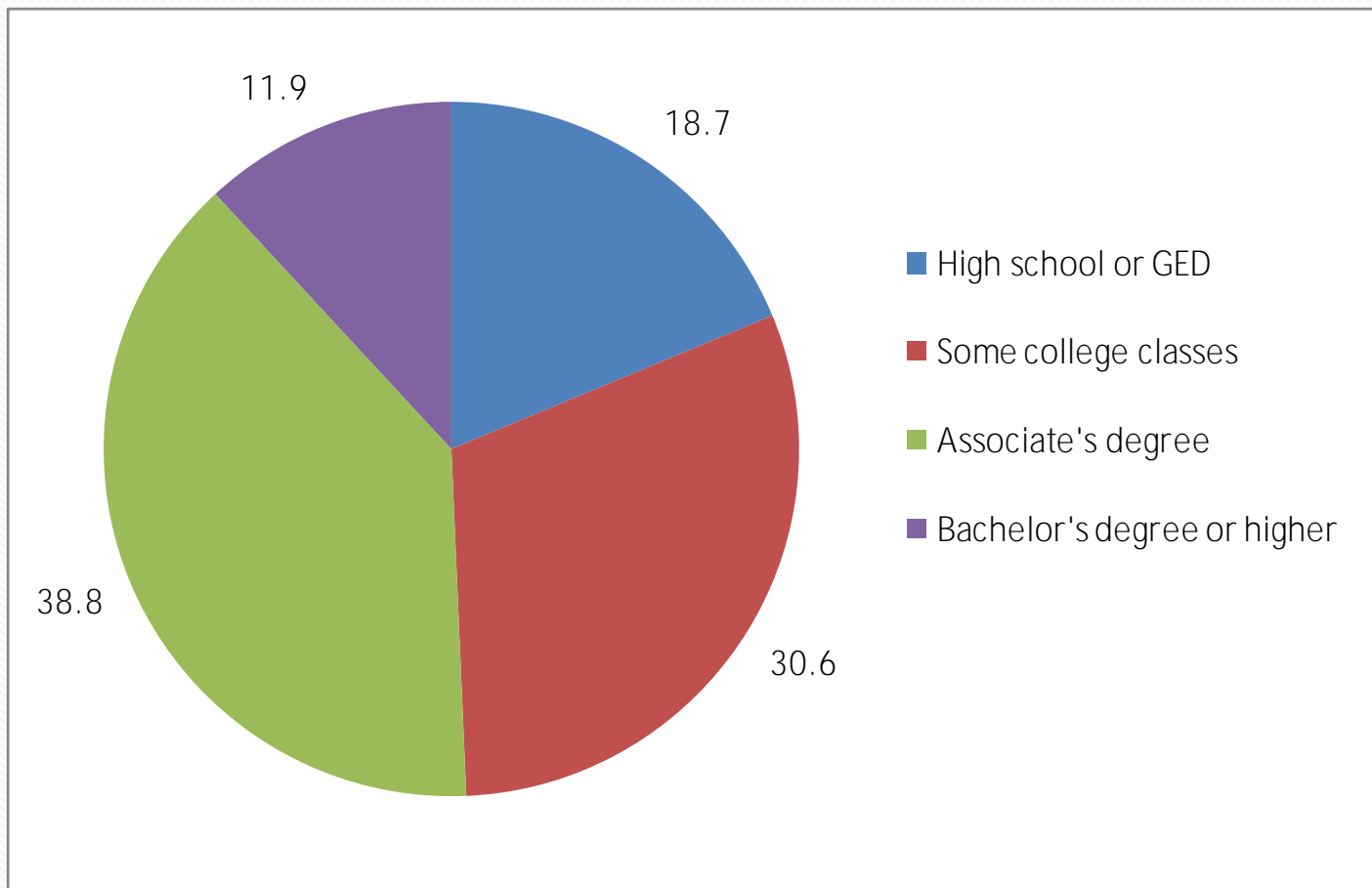
EXHIBIT 27: THIS INSTITUTION OFFERS STRATEGIES TO HELP ME COPE WITH THE MULTIPLE PRESSURES OF HOME, WORK, AND MY STUDIES.



Source: ALI, 2009; analysis by VSU SRA, June 2009.

ALI Results

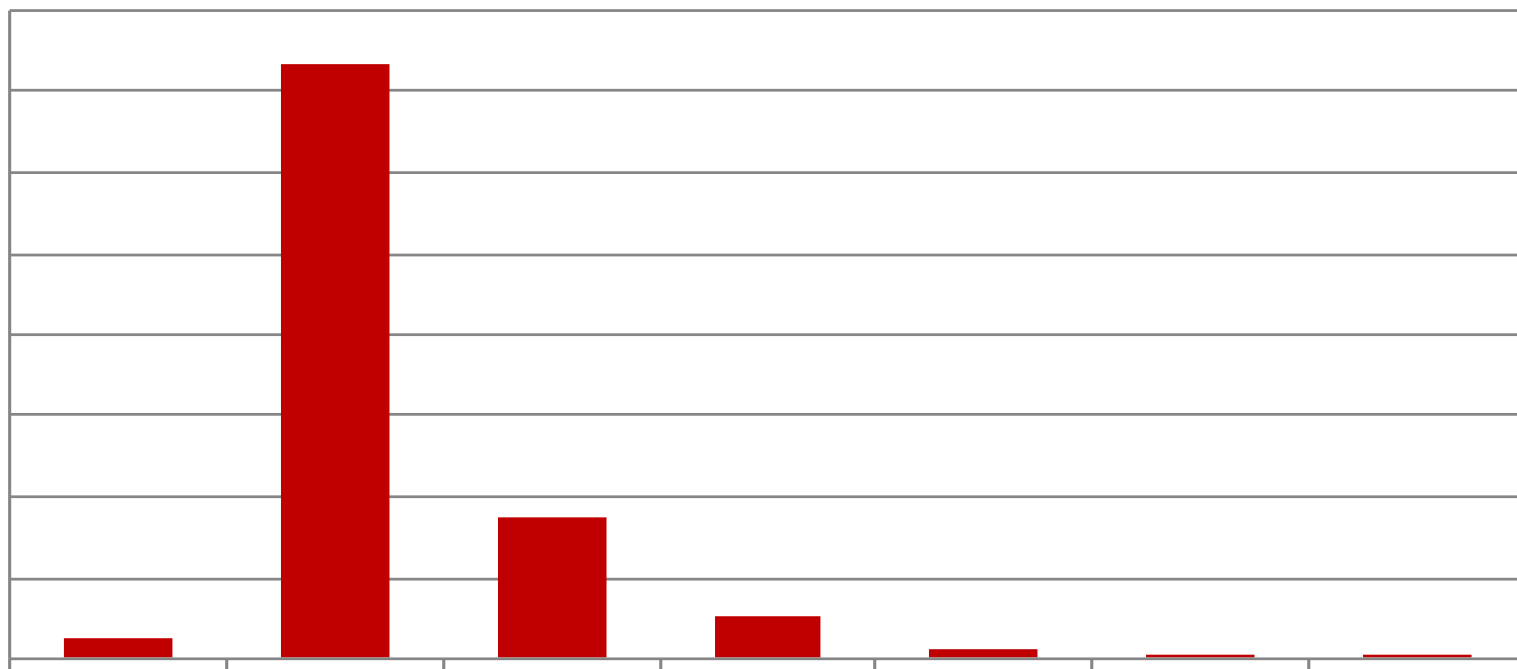
EXHIBIT 28: HIGHEST LEVEL OF EDUCATION COMPLETED BEFORE ENROLLING AT THIS COLLEGE



Source: ALI, 2009; analysis by VSU SRA, June 2009.

ALI Results

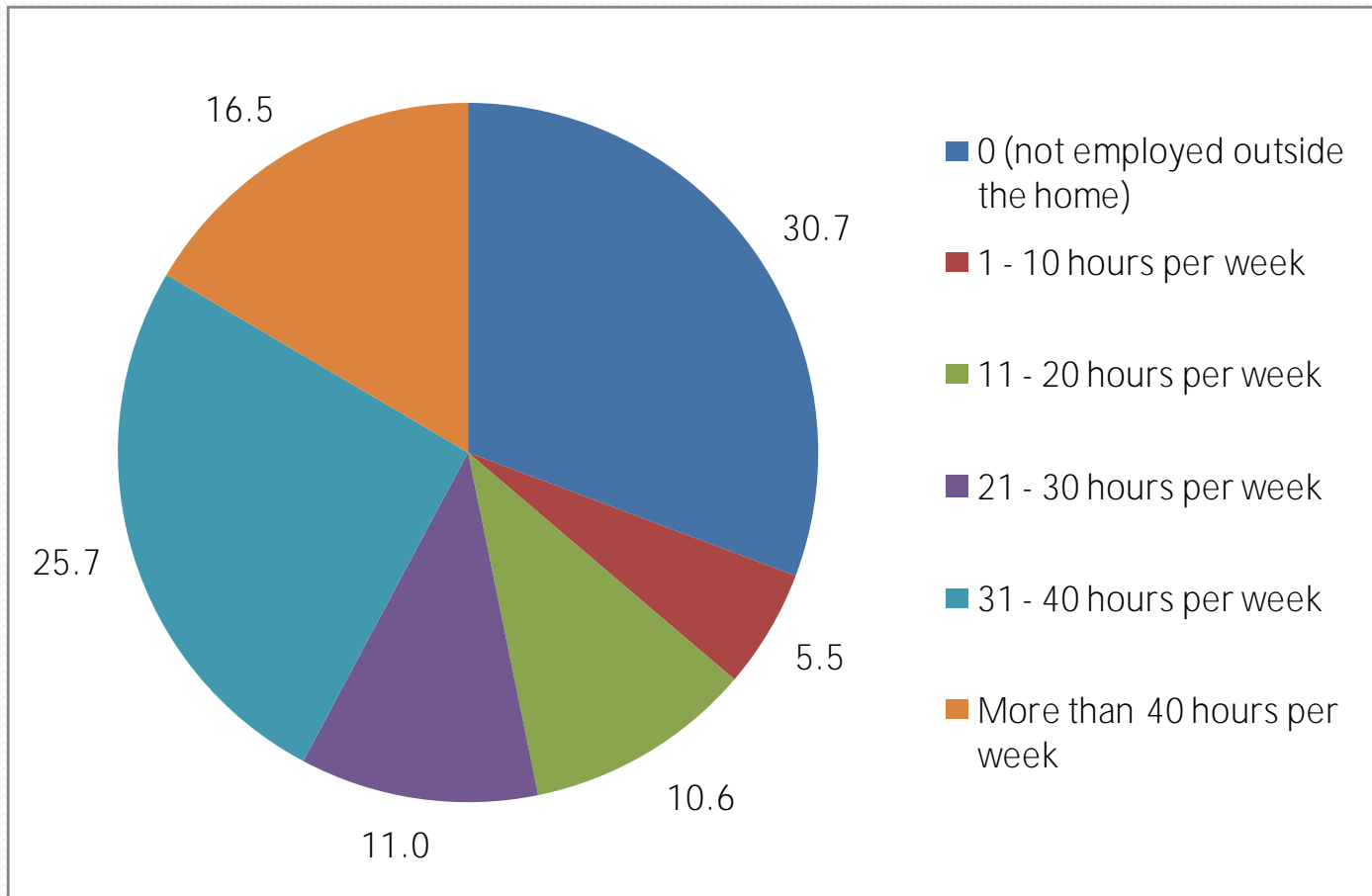
EXHIBIT 30: EDUCATIONAL PLANS



Source: ALI, 2009; analysis by VSU SRA, June 2009.

ALI Results

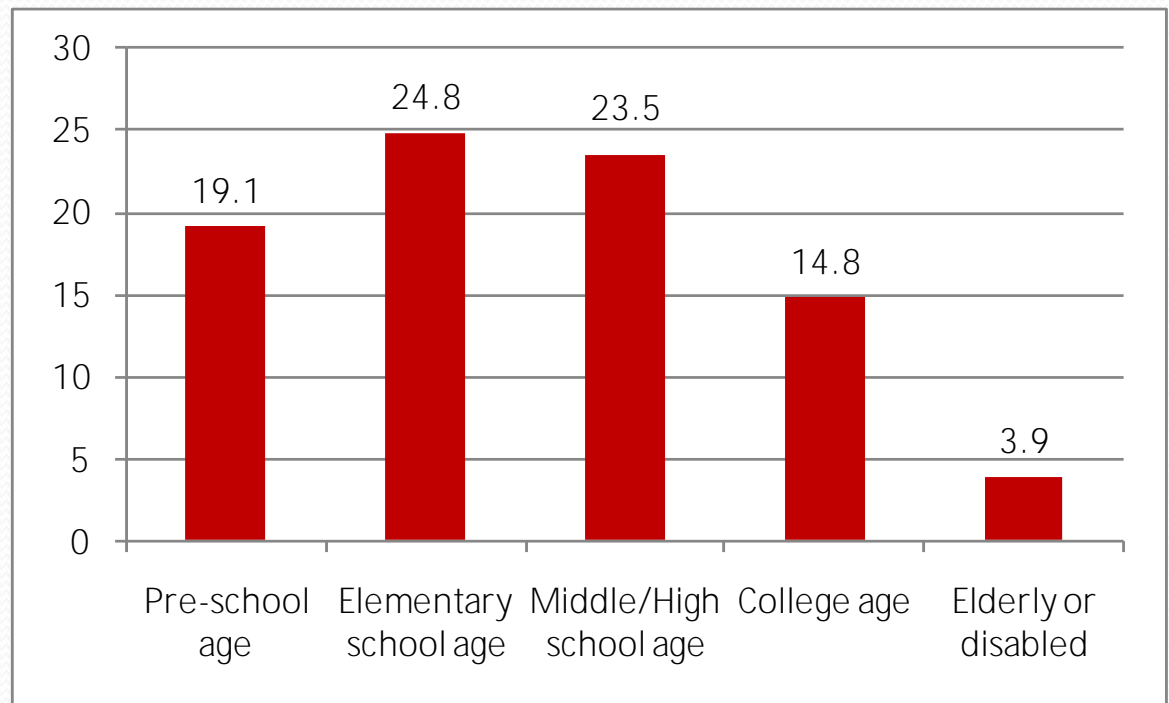
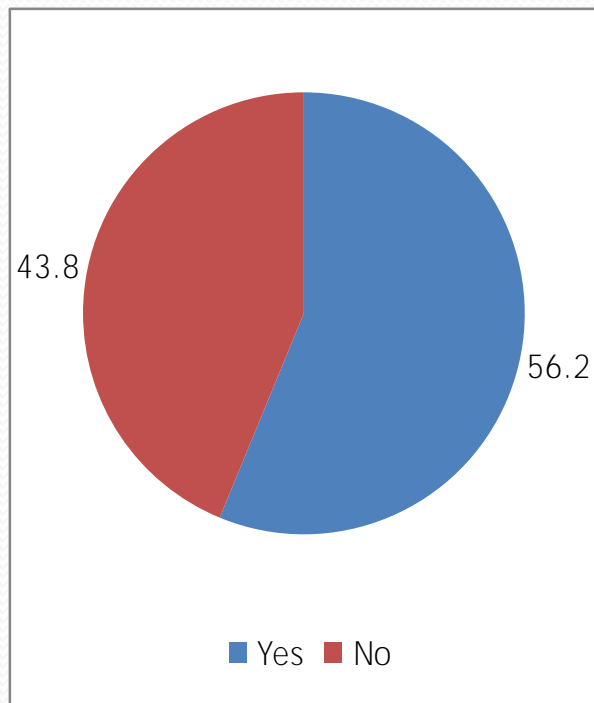
EXHIBIT 31: NUMBER OF HOURS EMPLOYED OUTSIDE THE HOME



Source: ALI, 2009; analysis by VSU SRA, June 2009.

ALI Results

EXHIBIT 32: PERCENTAGE OF RESPONDENTS WITH DEPENDENTS AND DEPENDENTS BY AGE



Source: ALI, 2009; analysis by VSU SRA, June 2009.



=b hYfYghYX ']b 'a cfY ']b Zcfa Uh]cb ' Å



Results From the Data

Kristina M. Cragg, Ph.D.
Assistant to the President for Strategic Research & Analysis
kmcragg@valdosta.edu

Angela H. Anderson, M.A.
Senior Research Analyst
asefcer@valdosta.edu

Valdosta State University | Strategic Research & Analysis
www.valdosta.edu/sra



