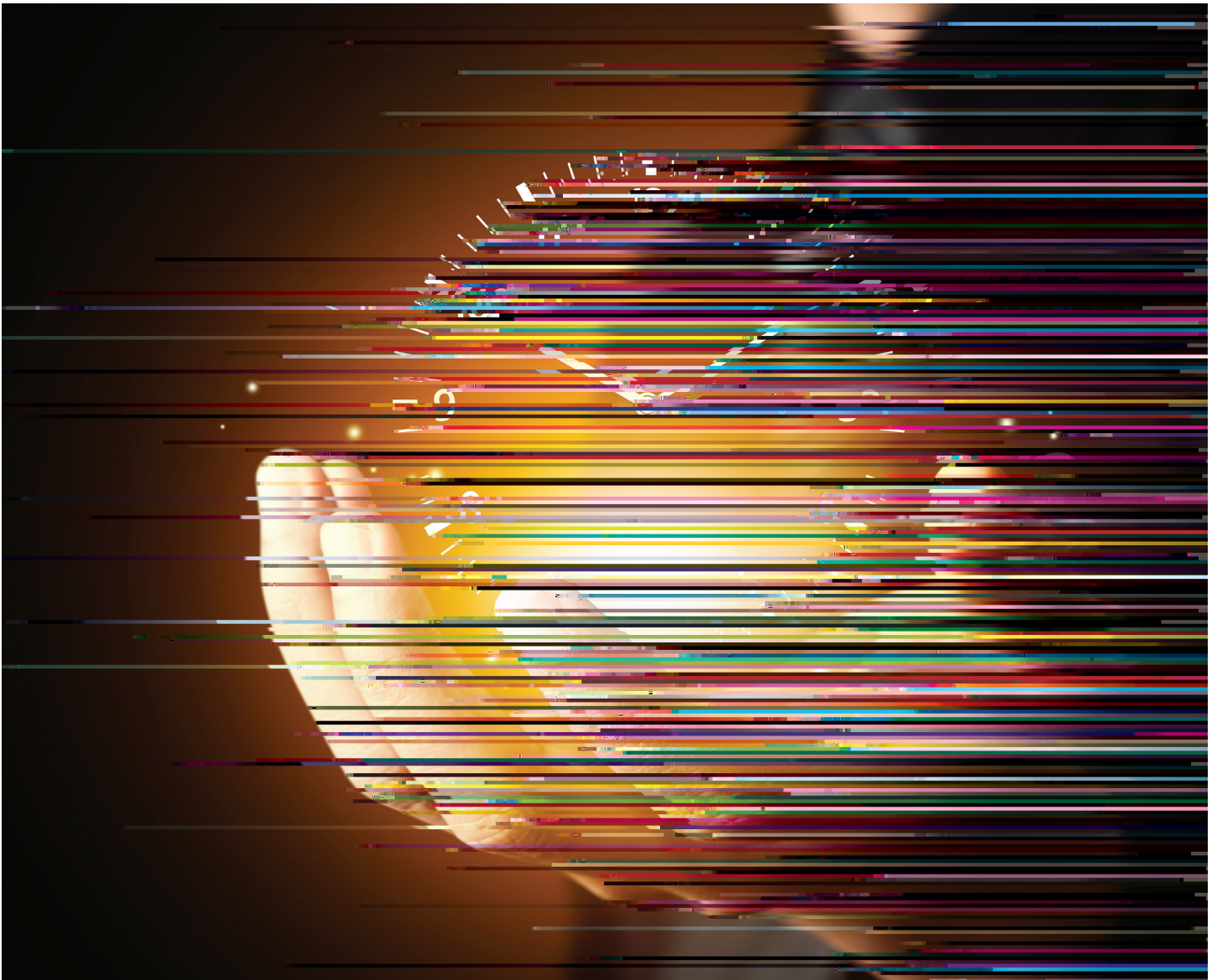


The Best Time for Beginning is Now!



V A L D O S T A S T A T E U N I V E R S I T Y

NINTH ANNUAL

**Graduate Student Research
& Scholarship Symposium**

APRIL 21, 2017

EFFECTS OF VINE PRESENCE ON SPANISH MOSS OCCURENCE
AND COVERAGE IN A SECONDARY FOREST

% U D Q G L * U L I ¿ Q

Dr. Corey Anderson, Faculty Mentor
Department of Biology

Potential interactions among vascular epiphytes and other structurally dependent autotrophs, such as vines,

A STUDY OF TABOO LANGUAGE AS A SOCIAL MARKER
IN MEN AND WOMEN OF VARIOUS AGE GROUPS

Eric Wildes

Dr. Li-Mei Chen, Faculty Mentor
Department of English

([SORULQJ WKH GLYHUVH ZD\ V WKDW DJH JHQGHU DQG LGHQWLW\ D
XQGHUVWDQGLQJ RI D EURDG VSHFWUXP RI VRFLDO FRQFHUQV 7KLV
ODQJXDJH LQ D PHQ DQG ZRPHQ RI YDULRXV DJH JURXS 6XEMHFWV
SHUFHLYHG LGHQWLW\ PDUNHUV WKH W\SHV RI WDERRPHQWV RDUH OWRP
DQG WKHLU SHUVRQDO SHUFHSWLRQV RI WKH OLVWHQHU DIIHFWHG V
ZRPHQ XVH VRPH W\SHV RI WDERR ODQJXDJH WR DVVLPLODWH ZLWK
\$GGLWLRQDO\ PHQ SHUFHLYH WDERR ODQJXDJH DV D VRFLDO\ DF
LQIRUPDWLRQ SURYLGHV FRQWH[W IRU D GHHS RYHQGHUWLRQDQ IZKJ
WHDFKHUV ZRUNLQJ LQ WKH ¿HOG RI (PRWLRQDO %HKDYLRUDO 'LVRU
HI¿FDFLRXV EHKDYLRUDO LQWHUYHQWLRQ SODQV

Modern and Classical Languages

UNDERSTANDING IMPLICATIONS OF OUTPUT IN TESOL:
THREE MAJOR FUNCTIONS OF OUTPUT IN THE PATH

Political Science

COMPROMISED JUSTICE: A STUDY ON THE ROLE OF QUASI-JUDICIAL OFFICERS IN GEORGIA'S STATE-LEVEL COURTS

Elizabeth Taylor

Dr. James T. LaPlant, Faculty Mentor
Department of Political Science

7KLV VWXG\ H[DPLQHV WKH EHKDYLRUDO DQG SHUFHSWLRQ GLIIHUHQ
LI WKHVH LQGLYLGXDOV SURYLGH HTXLWDEOH DQG IDLU WUHDWPHQV
WKH HLJKW K\SRWKHVVH GLIIHUHQFHV LQ WKH XVH DQG VDWLVIDFW
level of autonomy and discretion in completing daily activities help to reveal any differences that might exist.
8QGHUVWDQGLQJ WKHVH DVSHFWV FDQ KHOS WKH ORZHU OHYHO VWD
¿VFDO FRVWV 5HGFWLRQV LQ FRVWV DUH LPSRUWDQW JLYHQ WKH
,W LV FULWLFDO WR HQVXUH WKDW DGPLQLVWHULQJ VHFRQG UDWK M
7KLV VWXG\ H[DPLQHV RQO\ D VPDOO SRUWLRQ RI WKH SRVWHQWHDQ
XQGHUVWDQGLQJ RI WKH UROHV DQG UHVSQRVLELOLWLHV RI MXGJHV

College of Education and Human Services

Adult and Career Education

Communication Sciences and Disorders

THE RELATIONSHIP BETWEEN AN EXPERIMENTAL AUDITORY PROCESSING DISORDER
ASSESSMENT TASK AND PHONOLOGICAL AWARENESS

Morgan W. Cutts

Dr. Matthew Carter, Faculty Mentor
Department of Communication Sciences and Disorders

2YHU WKH SDVW KDOI FHQWXU\ WKHUH KDV EHHQ DQ LQFUHDVHG DZ
'LVRUGHUV &\$3' 7R GDWH WKHUH LV VWLOO QR FOHDU FRQVHQVXV
GLDJQRVHG RU WUHDWHG 7KH SXUSRVH RI WKL V WXG\ ZDV WR H[D
SKRQHPHV GLUHFWHG HDU WDVN DQG LQYHVWLJDWH WKH UHODWLRQ
SKRQRORJLFDO DZDUHQHVV DELOLWLHV 7ZR GLUHFWHG HDU GLFKRW
VXEWVWV IURP WKH 3\$7 ZHUH DGPLQLVWHUHG WR WKUHH W\SLFD
SKRQHPHV GLUHFWHG HDU WDVN DQG D &RPSHWLQJ :RUGV 'LUHFWHG
DQDO\VLV ZDV SHUIRUPHG WR H[DPLQH DVVRFLDWLRQV EHWZHHQ DO
IURP WKH H[SHULPHQWDO GLUHFWHG ULJKW \$DUZDWN SUBEXWDFG V
WDVN FRXOG VHUYH DV D SRWHQWLDO SUHGLFWRU RI SKRQRORJLFDO
VXEWVWV ZDV QRW UHODWHG WR SKRQRORJLFDO DZDUHQHVV DELOLV

THE EFFECTS OF PRESENTATION MODALITY AND RATE ON WORD
RECALL ABILITIES IN CHILDREN WITH AUTISM SPECTRUM DISORDERS

Melanie M. Hyde

Dr. Matthew Carter, Faculty Mentor
Department of Communication Sciences and Disorders

ORGL;FDWLRQV RI SUHVHQWDWLRQ PRGDOLW\ DQG SUHVHQWDWLRQ U
FKLOGUHQ GLDJQRVHG ZLWK DXWLVP VSHFWUXP GLVRUGHUV 7KH SU
\HDU ROG PDOH ZLWK D FRQ;UPHG GLDJQRVLV RI DXWLVP \$ VHULHV
ZRUGV ZHUH XWLOLJHG WR PHDVXUH UHFDOO 7KH SUHVHQWDWLRQ
conditions: auditory + visual at decreased rate, auditory at increased rate, auditory + visual at increased rate,
DQG DXGLWRU\ DW GHFUHDVHG UDWH \$ VXPPDU\ RI WKH UHFDOO DE
ZLWK DXGLWRU\ DQG DXGLWRU\ YLVXDO WULDOV DGGLWLRQDOO\ U
the increased presentation rate over decreased presentation rate. Consequently, the diverse needs of this
population require effective and accommodating administration of simple learning tasks for the facilitation of
complex learning.

THE INFLUENCES OF MATERNAL CAREER AND EDUCATION ON STUDENTS'
DECISION TO PURSUE THE PROFESSION OF SPEECH-LANGUAGE PATHOLOGY

Carlee D. Kelley

Dr. Mary M. Gorham-Rowan, Faculty Mentor
Department of Communication Science and Disorders

,Q WKH ¿HOG RI VSHHFK ODQJXDJH SDWKRORJ\ 6/3 VSHFL¿F IDFWR
ZLOO RU ZLOO QRW FKRRVH WKH FDUHHU 7KLV VWXG\ ZDV SURSRVH
or education on a student's decision to pursue a career SLP. Sixty-one VSU communication science and
GLVRUGHUV JUDGXDWH VWXGHQWV FRPSOHWHG D VXUYH\ WR DVVHV
RQ WKHLU GHFLVLRQ WR SXUVXH 6/3 7KH PDMRULW\ RI VWXGHQWV U
DQG RU D PDWHUQDO HGXFDWLRQ RI D PDVWHU¶V GHJUHH +RZHYHU
WKDW ERWK PDWHUQDO FDUHHU DQG HGXFDWLRQ KGHFLVLRQV QLVWQLS X
career in SLP.

THE EFFECT OF DEHYDRATION ON COGNITIVE FUNCTIONS IN HIGH
SCHOOL FOOTBALL PLAYERS

Victoria R. Lovett

Dr. Mary Gorham-Rowan, Faculty Mentor
Department of Communication Sciences and Disorders

+LJK VFKRRO IRRWEDOO VHDVRQ H[WHQGV IURP \$XJXVW WKURXJK 'HF
VFKHGHOHG IURP 0D\ WKURXJK -XO\ 7KH VXPPHU KHDW LQFUHDVHV V
PD\ DIIHFW FRJQLWLRQ WKH SXUSRVH RI WKLW VWXG\ ZDV WR H[DPL
RQ VHYHUDO FRJQLWLYH WDVNV DIWHU D GD\ RI VXPPHU SUDFWLFH
DQG ERG\ PDVV FDKQJHV)RUW\ ¿YH PDOH IRRWEDOO SOD\HUV FRPS
WDVN EHIRUH DQG DIWHU SUDFWLFH 7KH SOD\HUV ZHUH ZHLJKHG EH
FKDQJHV 7KH UHVXOWV RI WKH VWXG\ VKRZH G WKDW WKH SOD\HUV
FKDQJH LQ ERG\ PDVV DQG SHUIRUPHG VLJQL¿FDQWO\ ZRHHW ZQWKH
found for the visuospatial task.

THE EFFECTS OF IMPLEMENTING THE MINIMAL OPPOSITIONS APPROACH TO
ARTICULATION THERAPY COUPLED WITH FLIP THERAPY TO INCREASE
CORRECT /r/ PRODUCTION AT THE ISOLATION, INITIAL POSITION OF
SYLLABLES, AND IN THE INITIAL POSITION OF WORDS

Charles Dylan McLean

Dr. Matthew Carter, Faculty Mentor
Department of Communication Sciences and Disorders

7KLV VWXG\ ZDV GHVLJQHG WR H[SORUH WKH HIIHFWV RI LPSOHPHQW
FOLHQW FHQWHUHG RU ÀLS WKHUDS\ LQ RUGHU WR LQFUHDVH WKH F
DOWHUQDWLQJ V\OODEOHV DQG LQ WKH LQLWLDO SRVLWLRQ RI ZRU
DELOLW\ WR VHOI PRQLWRU HUURQHRXV SURGXFWLRQV 7KH FOLHQW
FOLQLFLDQ WR VFRUH WKH FOLQLFLDQ SURGXFWLRQV 7KH FOLHQW
ZDV HUURQHRXV DQG ZKDW VKRXOG EH GROUHW B DSSURDFK QWK H VFRUH
RQ U SURGXFWLRQ LQ LVRDWRQ V\OODEOH WHDQGL QWK H DSSURDFK
ZKLFK WKH PLQLPDO RSSRVLWLRQV DSSURDFK DSSURDFK QWK H DSSURDFK
LQFUHDVHG WR RU DERYH LQ LVRDWRQ V\OODEOH LQLWLDO D

KINESIO TAPE IN THE TREATMENT OF DYSPHAGIA

Katherine B. Stone

Katherine Walden, Melissa Carter,
Drs. Mary Gorham-Rowan and Renee Hannibal, Faculty Mentors
Department of Communication Sciences and Disorders

'\VSKDJLD LV D ZHOO NQRZQ FRPSOLFDFWLRQ RI DQWHULRU FHUYLFDQ
\HDUV SRVW RSHUDWLYHO\ 7UDGLWLRQDO G\VSKDJLD WUHDWPHQW
DQG RU VSHFL¿F H[HUFLVHV WR LPSURYH VWUHQJWK DQG IXQFWLRQ
QRYHO DSSURDFK WR WUHDWLQJ G\VSKDJLD LV WKH SXUHHG QWK H DSSOL
PDOH ZKR KDG XQGHUJRQH \$&) VXUJHU\ DSSUR[LPDWHO\ \HDU SULR
WKH LQLWLDO HYDOXDWRQ LQGLFDWHG \$RORGR & SUHQVFLQDWRQ HD
PRQWK ODWHU UHYHDOHG UHGXFHG HSLJORWWLF LQYHUSSUR[LPDWHO\
PRQWKV DIWHU WKH LQLWLDFWLRQ RI WKHUDS\ .7 ZDV LQWURGXFHG
DSSOLFDELOLW\ .7 ZDV DSSOLHG WR WKH VXSUDK\RLG DUHD ,QLWL
UHVLGXH ZLWK SXUHHG FRQVLVWHQF\

A COMPARISON OF HEALTHCARE AND NON-HEALTHCARE PROFESSIONALS'

Library and Information StudiesYOU CAN VIEW THE TWEETS!: CONTENT ANALYSIS OF TWEETS
MENTIONING WORKS IN AN INSTITUTIONAL REPOSITORY

Ashley D. Lowery

Dr. Linda Most, Faculty Mentor
Department of Library and Information Science

Academic libraries provide resources scholars can use to measure their scholarly output, including altmetrics products. Altmetrics recently emerged to accommodate the sharing and dissemination of scholarship on

WKH VRFLDO ZHE 7KH VFKRODUO\ FRPPXQLW\ LV JUDSSOLQJ ZLWK X
 WKHVH SURGXFWV 7KLV VWXG\ XVHV DOWPHWULFV SURYLGHG E\ 3OX
 WZHHWV PHQWLRQLQJ ZRUNV IURP D 'LJLW D300 X R \$PQDQX WLIQFWW\$ WRXWLLGR
 QXPEHU RI WZHHWV DQG UHWZHHWV DQG TXDOLWLYH WYUH , @ RYQKLVQWW
 TXDOLWLYH GDWD LV FROOHFWHG DQG FRGHG WR GHWHUPLQH WK
 RWKHU LQIRUPDWLRQ LQFOXGLQJ WKH WZHHWV DDXWKRU WKH LQWH
 KHOS EHWWHU XQGHUVWDQG WKH PHDQLQJ EHKLQG 7ZLWWHU GDWD
 WZHHWV DV VFKRODUVKLS PHDVXUHV

Kinesiology and Physical Education

DOES SOUTH GEORGIA'S TOLERANCE TOWARDS TRANSGENDER
 MEASURE UP TO OTHER REGIONS IN THE UvrE7.6 AVó•à aL Q .vãÀ \ JÀ ð ' H D Y À

Psychology, Counseling, and Family Therapy

THE EFFECTS OF SOCIAL MEDIA USAGE ON ATTENTION,

HOW ARE PERCEPTIONS OF INTIMATE RELATIONSHIPS
CREATED AND REIFIED BY SOCIAL MEDIA

\$EULHO %ODNH)DUURZ 5HGRQQR &DUPRQ (YHQ\ *ULI¿Q 9

Dr. Jennifer Lambert-Shute, Faculty Mentor
Department of Psychology, Counseling, and Family Therapy

6RFLDO PHGLD KDV D VXEVWDQWLDO DPRXQW KLVLQDQDOLWDO YHHUHQ
RQ KRZ VRFLDO PHGLD FUHDWHV DQG UHL¿HV SHUFHSWLRQV RI LQWL
UHODWLRQDO FRQQHFWRQ EHWZHHQ VRFLDO PHGLD DQG LQWLPDWH
ZKR KDYH EHHQ LQ DQ LQWLPDWH UHODWLRQV KLSHZIRXQG HQYDJLDO
WR KHOS EHWWHU XQGHUVWDQG RXU UHODWLRQV K6TXUDWLRQV W3D0DL
DQG .HHSLQJ XS ZLWK WKH -RQHVVH

BRIEF MEASURE OF EMOTIONAL DYSREGULATION SCALE:
PRELIMINARY DEVELOPMENT AND VALIDATION

Samantha D. Hartman

Dr. David Wasieleski, Faculty Mentor
Department of Psychology, Counseling, and Family Therapy

(PRWLRQDO G\VUHJXODWLRQ LV DQ LQWHJUDO XQGHUO\LQJ FRPSRQH
V\PSWRP SUHVHQWDWLRQ DQG DQ LQGLYLGXDO ¶V RYHUDOO DELOLW\
RQ HPRWLRQDO G\VUHJXODWLRQ WKHUH LV QHHG IRU 78 HE SUHRIS RFDIG
VFDOH LV HI¿FLHQW DQG PD\ TXLFNO\ DVVHV V\PSWRP UHVHQV LQWLQ
used an exploratory factor analysis to determine the underlying structure of the items and explore initial
SV\FKRPHWULF SURSHUWLHV RI D QHZ PHDVXUH WKH %ULHI 0HDVXUH
5HVXOWV LQGLFDWH WKDW WKH SURSRVHG VFDOH PHDVXUHV D XQLG
DQG YDOLGLW\ 3UHOLPLQDU\ ¿QGLQJV VXJJHVW WKDW WKH SURSRVH
PD\ EH EHFDXVH WKH YDULRXV FRPSRQH QWV DUH KLJKO\ LQWHUOH
VFDOHV DQG DW LWHPV LV VLJQL¿FDQWO\ VKRUWHU

Middle, Secondary, Reading and Deaf Education

EFFECTS OF ENHANCED ALPHABET KNOWLEDGE STRATEGY ON ALPHABET KNOWLEDGE ACHIEVEMENT FOR PRE-K STUDENTS

Susan B. Esra

Dr. Ellice Martin, Faculty Mentor
Department of Middle, Secondary, Reading, and Deaf Education

7KH SXUSRVH RI WKLV VWXG\ ZDV WR GHWHUPLQH ZKHUHQHUW XVLQJ
LPSURYH DFKLHYHPHQW DWWLWXGHV DQG HQJDJHPHQW WRH VSKG\N
H[DPLQH VWXGHQW JURZWK GXULQJ D ZHHN SHULRG RI WUDGLWLR
FKDUWV DQG D ZHHN SHULRG RI LQVWUXFWLRQ XVLQJ WKH (QKDQFH
GDWD ZHUH FROOHFWHG XVLQJ DQ DOSKDEHW NQRZOHGJH SUHWHVW
D VXUYH\ HQJDJHPHQW GDWD ZHUH FROOHFWHG XVLQJ D FKHFNOLV
VLJQL¿FDQWO\ JUHDWHU JDLQV LQ DOSKDEHW NQRZOHGJH DFKLHYHP
QDPLQJ ZHUH PRUH VLJQL¿FDQW WKDQ LQ OHWWHU VRXQG SURGXFW
6WXGHQWV VKRZH G VLJQL¿FDQWO\ KLJKHU OHYHOV RI HQJDJHPHQW
LQVWUXFWLRQ 7KH LQWHUYHQWLRQ ZDV IRXQG WR KDYH D VLJQL¿FD

EFFECTS OF USING INCREMENTAL REHEARSAL WITH PERCENTAGES OF 60/40 OR 85/15 KNOWN AND UNKNOWN FACTS ON MATHEMATICS FLUENCY ACHIEVEMENT FOR THIRD-GRADE STUDENTS

Catrina L. White

Dr. Ellice Martin, Faculty Mentor
Department of Middle, Secondary, Reading and Deaf Education

7KH SXUSRVH RI WKLV VWXG\ ZDV WR GHWHUPLQH ZKHUHQHUW XVLQJ LQ
DQG XQNQRZQ RU D UDWLR NQRZQ DQG XQNQRZQ PDWKHPDW
KLJKHU JDLQV LQ DFKLHYHPHQW LPSURYHG DWWLWXGHV WRZDUG SU
JUDGH VWXGHQWV \$FDGHPLF DFKLHYHPHQW ZDV PHDVXUH E\ SUHW
ZHUH FRPSDUHG %RWK JURXS PDGH VLJQL¿FDQWO\ PDIDQV GLQI B B KIQFY
QRW VDWLVWLFDOO\ VLJQL¿FDQWO\ W S 21 MHK W VRZR
DFKLHYHPHQW G 6WXGHQW DWWLWXGH ZDV PHDVXUH XVLQJ
DWWLWXGH XVLQJ WKH UDWLR RI NQRZQ DQG XQNQRZQ IDFWV 6
%HKDYLRUDO &KHFNOLVW DQG HQJDJHPHQW ZDV KLJKHU IRU WKH
completed practice sessions.

Social Work

EFFECTIVENESS OF VISION BOARD INTERVENTION ON
PROBLEMATIC BEHAVIOR AT A SCHOOL SYSTEM

Brandi Abbott

Dr. Hanae Kanno, Faculty Mentor
Department of Social Work

7KH SXUSRVH RI WKL V WXG\ LV WR GHFUHDVH DQG PDQDJH SUREOH
ZKR LV KDYLQJ EHKDYLRUDO LVVXHV DW WKLV JLRXS K RFXHE ZKH FV H5 MKK
'HVLJQ 665' LV GHVLJQH WR GHFUHDVH SUREOHPDWLF EHKDYLRU
possible consequences of problematic behavior, and to help the client to establish incentives for maintaining
DSSURSULDWH QRQ SUREOHPDWLF EHKDYLRU 7KLV 6LQJOH 6XEMHFV
WKDW XVHV D IRUP RI DUW WKHUDS\ WR FUHDW \$ DSYHVLQWHUJUDQL
LQWHUYHQWLRQ UHVHDFK GHVLJQ 7KH RSHUDWLRQDO PHDVXUHV
PDQ\ WLPHV WKH FOLHQW IHOW WKH\ KDG SUREOHPDWLF EHKDYLRU
KRZ PDQ\ WLPHV WKDW ZHHN WKH FOLHQW FRQDOWHG SURIEWKPDWLF
WKDW XVLQJ 9LVLRQ %RDUG ,QWHUYHQWLRQ ZDV HIIHFWLYH LQ WKH

A MENTAL HEALTH AND GUN CONTROL: A FOUR STATE POLICY
COMPARATIVE APPROACH TO GUN ACCESSIBILITY

Stacy Benbrooks

Dr. Phillip Dybicz, Faculty Mentor
Department of Social Work

6RPH RI WKH 6WDWHV FXUUHQW SROLFLHV RQ JXQ FRQWURO KDYH J
KHDOWK GLVRUGHUV WKH DELOLW\ WR SRVVHV ZHDSRQV WKDW DUH
*XQ &RQWURO \$)RXU 6WDWH 3ROLF\ &RPSDUDWLYH \$\$\$SURDFK WR *X
VWDWHV *HRUJLD 7H[DV \$UL]RQD DQG ,GDKR DQG WKHLU JXQ FRQW
WDNH RQ GLIIHUHQW VWDQFHV LQ GHWHUPLQLQJ WKRVH ZLWK PHQW
SRVWPRGHUQ FRPSDUDWLYH DQDO\VLV DOVR H[DPLQHV WKH 6WDWHV
SURDFWLYH LQ SURWHFWLQJ WKHLU FLWL]HQV IURP WKRVH ZLWK VHI
WKHPVHOYHV RU RWKHUV ZKLOH DW WKH VDPH WLPH UHVSHFWLQJ W

EFFECTIVENESS OF A TOKEN ECONOMY FOR DECREASING DISRUPTIVE
BEHAVIORS AND SYMPTOMS OF ATTENTION DEFICIT HYPERACTIVITY
DISORDER (ADHD) AND ANXIETY IN A CHILD

Jasmine Gilmore

Dr. Hanae Kanno, Faculty Member
Department of Social Work

7KH SXUSRVH RI WKLV VWXG\ LV WR GHFUHDVH GLVUXSW\$WHBQDLYRQ

VETERAN HOMELESSNESS: A COMPARATIVE POLICY ANALYSIS

Sandra H. Lowe

Dr. Phillip Dybicz, Faculty Mentor
Department of Social Work

8WL0L]LQJ D VRFLDO MXVWLFH IUDPHZRUN D FRPSDUDWLYH DQDO\VLV
DQG SKLORVRSKLHV EHVW DGGUHVV WKH VRFLDO SUREOHP RI YHWHUD
H[SORUHV WKH 8QLWHG 6WDWHV¶ KLVWRULFDO DSSURDFK WR YHWHUD
OHJLVODWLRQ SROLFLHV DQG VRFLDO PRUHV RI WKH SHULRG 7KLV L
XWL0L]LQJ WKH SROLFLHV RI \$XVWUDOLD WKH 8QLWHG .LQJGRP DQG
ZDV IRXQG WKDW WKH 8QLWHG 6WDWHV¶ FXUUHQW YDOXH VHW JXLGLQ

RELATIVE CARE ASSISTANCE FOR FOSTER CHILDREN

Samantha V. Whisler

Dr. Phillip Dybicz, Faculty Mentor
Department of Social Work

8WLOLJLQJ D FRPSDUDWLYH DQDO\VLV VRFLDO MXVWLFH IUDPHZRUNV
 IUDPHZRUN EHVW DGGUHVHV WKH LVVXH RI UHODWLYH FDUH DVVLVW
 approach further explores the United State's present and past legislation and policies in regards to assistance for
 relative caretakers. An international comparison further examines the current policies and legislation utilized in the
 8QLWHG .LQJGRP (QJODQG &DQDGD DQG \$XVWUDOLD 7KH \$XVWUDOL
 SUHVXPSWLYH HTXDOLW\ XVLQJ D OLEHUDOLVWLF PHWKRG RI GLVWULE
 LQ DGGUHVVLQJ WKLV VRFLDO LVVXH ZLWK RI IRVWHU FKLOGUHQ
 IUDPHZRUN FDQ DQG VKRXOG EH XVHG DV D PRGHO IRU RWKHU FRXQW
 ZLWK UHODWLYHV

The Graduate School

LOCATION Converse Hall • 3rd Floor

ADDRESS 1500 N. Patterson St. • Valdosta, GA 31698-0005

PHONE 229.333.5694 • TOLL FREE 800.618.1878 • EXT 5 • FAX 229.245.3853

WEB